

# **S&P/TSX Index Report For April 2011**

- **Portfolio Changes Summary**
- **S&P/TSX Indexes Market Summary**
- **S&P/TSX Composite Index Graph**
- **S&P/TSX Composite Index History**
- **S&P/TSX Composite Index Constituents**
- **S&P/TSX 60 Indices Constituents**
- **S&P/TSX Completion Indices Constituents**
- **S&P/TSX SmallCap Indices Constituents**
- **S&P/TSX Capped Sector Indices Constituents**
- **S&P/TSX Major Indices Monthly Summary**
- **S&P/TSX 60 Index History & Graph**
- **S&P/TSX Completion & Small Cap Index & Graphs**
- **S&P/TSX Sub Indices Graph**
- **S&P/TSX Income Trusts Graph**
- **S&P/TSX Index Returns & Weights**

## Portfolio Changes Summary

Eff. Date	Sym.	Stock	S&P/TSX Composite	S&P/TSX 60	S&P/TSX Completion	S&P/TSX SmallCap	Sector	Special Index	Reason
04-Apr	WTN	Western Coal Corp.	Delete		Delete	Delete	TTMT, TTMN	Global Mng & BM	Acquired by Walter Energy for cash and shares
11-Apr	FRG	Fronteer Gold Inc.	Delete		Delete	Delete	TTMT	Gl. Mining & Gold	Acquired by Newmont Mining \$C14.00 cash/share
12-Apr	BDT	Bird Construction Inc.				Split 3:1		Dividend Aristo.	Split 3:1
12-Apr	NA.PR.O	National Bank of Canada 5-yr 1st Pr Series 24						Pref. Sh.	Parent share buyback
18-Apr	BMO.PR.Q	Bank Of Montreal 5-Yr Reset Cl 'B' Pr Ser 25						Pref. Sh.	Add in Quarterly Pref. Sh. Index Review
18-Apr	BAF.PR.A	Bell Aliant Preferred Equity Inc. Ser 'A' Pr						Pref. Sh.	Add in Quarterly Pref. Sh. Index Review
18-Apr	BAM.PR.X	Brookfield Asset Managemnt Inc Cl A Pr Ser 28						Pref. Sh.	Add in Quarterly Pref. Sh. Index Review
18-Apr	BPO.PR.J	Brookfield Properties Corp. Cl Aaa Pr Ser 'J'						Pref. Sh.	Add in Quarterly Pref. Sh. Index Review
18-Apr	DC.PR.A	Dundee Corporation 5.00% Ser '1' Pr						Pref. Sh.	Add in Quarterly Pref. Sh. Index Review
18-Apr	FTS.PR.C	Fortis Inc. 1st Pr Series 'C'						Pref. Sh.	Add in Quarterly Pref. Sh. Index Review
18-Apr	GMP.PR.B	GMP Capital Inc. 5-Yr Rst Ser 'B' Pr						Pref. Sh.	Add in Quarterly Pref. Sh. Index Review
18-Apr	HSE.PR.A	Husky Energy Inc. Series '1' Pr						Pref. Sh.	Add in Quarterly Pref. Sh. Index Review
18-Apr	MFC.PR.F	Manulife Financial Corp. Cl 1 Pr Ser '3'						Pref. Sh.	Add in Quarterly Pref. Sh. Index Review
18-Apr	REI.PR.A	Riocan Reit Unit Preferred Series 'A'						Pref. Sh.	Add in Quarterly Pref. Sh. Index Review
18-Apr	RON.PR.A	Rona Inc. 5.25% Ser 6 Cl 'A' Pr						Pref. Sh.	Add in Quarterly Pref. Sh. Index Review
18-Apr	TD.PR.N	Toronto-Dominion Bank (The) Cl 'A' 1st Pr N						Pref. Sh.	Add in Quarterly Pref. Sh. Index Review
18-Apr	TCA.PR.X	Transcanada Pipelines Limited 1st Pr 'U'						Pref. Sh.	Add in Quarterly Pref. Sh. Index Review
18-Apr	TCA.PR.Y	Transcanada Pipelines Limited 1st Pr 'Y'						Pref. Sh.	Add in Quarterly Pref. Sh. Index Review
18-Apr	ALLY PRA	Gmac Cap Tr I Gtd Tr Pfd-2						Pref. Sh.	Add in Quarterly Pref. Sh. Index Review
18-Apr	ALLY PRB	Ally Finl Inc Perp Pfd-A Flt						Pref. Sh.	Add in Quarterly Pref. Sh. Index Review
18-Apr	ELS PRA	Equity Lifestyle Ppty Inc Perp Pfd-A 8%						Pref. Sh.	Add in Quarterly Pref. Sh. Index Review
18-Apr	FITBP	Fifth Third Bancorp Cnv Pfd Dep1/250						Pref. Sh.	Add in Quarterly Pref. Sh. Index Review
18-Apr	FPO PRA	First Potomac Rlty Tr Cum Red Pfd-A						Pref. Sh.	Add in Quarterly Pref. Sh. Index Review

TTTS = Telecommunication Services; TTTK = Information Technology; TTCS = Consumer Staples; TTHC = Health Care; TTMT = Diversified Metals and Mining; TTGD = Gold; TTIN = Industrial; TTEN = Energy.

Eff. Date	Sym.	Stock	S&P/TSX Composite	S&P/TSX 60	S&P/TSX Completion	S&P/TSX SmallCap	Sector	Special Index	Reason	
18-Apr	GT PRA	Goodyear Tire & Rubr Co Pfd Pfd Conv						Pref. Sh.	Add in Quarterly Pref. Sh. Index Review	
18-Apr	HCN PRI	Health Care Reit Inc Pfd Per Con I						Pref. Sh.	Add in Quarterly Pref. Sh. Index Review	
18-Apr	KIM PRH	Kimco Rlty Corp Pfd CI H						Pref. Sh.	Add in Quarterly Pref. Sh. Index Review	
18-Apr	MCP PRA	Molycorp Inc Del Pfd Conv Ser A						Pref. Sh.	Add in Quarterly Pref. Sh. Index Review	
18-Apr	MHR PRC	Magnum Hunter Res Corp Del Pfd Prp C 10.25%						Pref. Sh.	Add in Quarterly Pref. Sh. Index Review	
18-Apr	PEB PRA	Pebblebrook Hotel Tr Cv CII Pfd-A						Pref. Sh.	Add in Quarterly Pref. Sh. Index Review	
18-Apr	SFI PRE	Istar Finl Inc Pfd E 7.875%						Pref. Sh.	Add in Quarterly Pref. Sh. Index Review	
18-Apr	SFI PRI	Istar Finl Inc Pfd Ser I						Pref. Sh.	Add in Quarterly Pref. Sh. Index Review	
18-Apr	SSW PRC	Seaspan Corp Perp Pfd-C9.5%						Pref. Sh.	Add in Quarterly Pref. Sh. Index Review	
18-Apr	TDJ	Telephone & Data Sys Inc Pfd						Pref. Sh.	Add in Quarterly Pref. Sh. Index Review	
18-Apr	UIS PRA	Unisys Corp Pfd Ser A 6.25%						Pref. Sh.	Add in Quarterly Pref. Sh. Index Review	
22-Apr	CSE	Capstone Infrastructure Corporation						Name Chg.	Clean Technology	Name & ticker change from MPT - Macquarie Power & Infrastructure Corporation
02-May	NWC	North West Company (The)	Ticker Chg.		Ticker Chg.	Ticker Chg.	TTCS	Dividend Indices	Ticker change from NWF (no name change)	

TTTS = Telecommunication Services; TTTK = Information Technology; TTCS = Consumer Staples; TTHC = Health Care; TTMT = Diversified Metals and Mining; TTGD = Gold; TTIN = Industrial; TTEN = Energy.

## The S&P/TSX Indexes™ Market Summary by Standard & Poor's

The annual compound rate of return (including dividends) for the Composite Index to April 30, 2011:

<b>1 Year:</b>	<b>3 Year:</b>	<b>5 Year:</b>	<b>10 Year:</b>
17.22%	3.05%	5.63%	8.26%

The annual compound rate of return (including dividends) for the 60 Index to April 30, 2011:

<b>1 Year:</b>	<b>3 Year:</b>	<b>5 Year:</b>	<b>10 Year:</b>
14.32%	1.66%	5.71%	8.06%

The annual compound rate of return (including dividends) for the Canadian Completion to April 30, 2011:

<b>1 Year:</b>	<b>3 Year:</b>	<b>5 Year:</b>	<b>10 Year:</b>
26.54%	8.03%	6.27%	9.42%

The annual compound rate of return (including dividends) for the Canadian SmallCap to April 30, 2011:

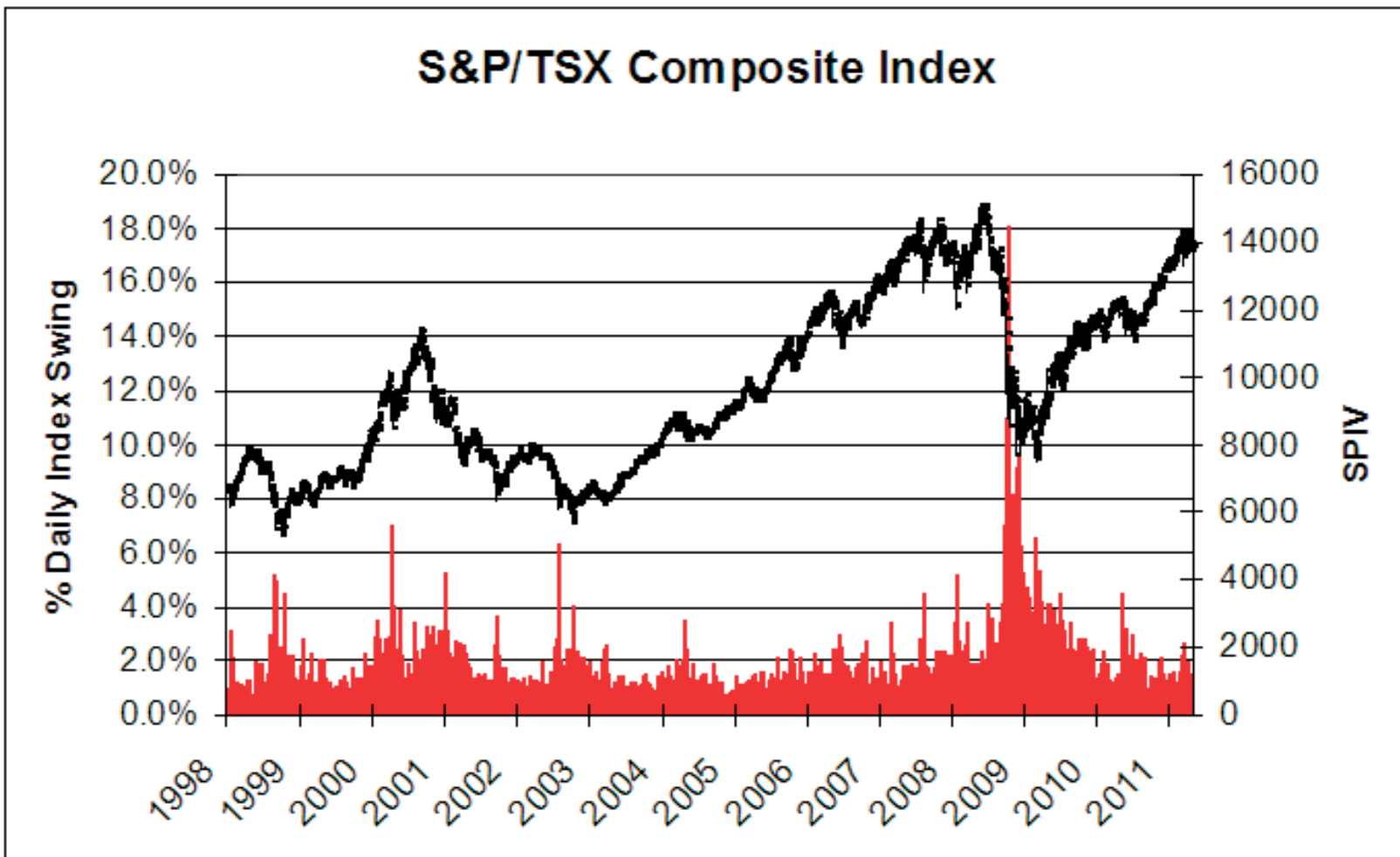
<b>1 Year:</b>	<b>3 Year:</b>	<b>5 Year:</b>	<b>10 Year:</b>
29.10%	8.18%	4.71%	7.83%

The annual compound rate of return (including dividends) for the 60 Capped Index to April 30, 2011:

<b>1 Year:</b>	<b>3 Year:</b>	<b>5 Year:</b>	<b>10 Year:</b>
14.32%	1.66%	5.71%	8.25%

The annual compound rate of return (including dividends) for the Capped Composite Index to April 30, 2011:

<b>1 Year:</b>	<b>3 Year:</b>	<b>5 Year:</b>	<b>10 Year:</b>
17.22%	3.06%	5.63%	8.29%



**S&P/TSX COMPOSITE INDEX  
DAILY LEVELS FOR THE MONTH OF APRIL 2011**

DATE	HIGH	LOW	CLOSE	VOLUME	TRIV
April 01	14,181.48	14,116.79	14,130.15	240,069,069	38,588.03
04	14,248.73	14,145.45	14,218.35	226,202,915	38,828.88
05	14,270.53	14,187.94	14,270.53	233,507,401	38,971.39
06	14,314.45	14,139.45	14,202.65	234,208,030	38,787.42
07	14,215.61	14,096.87	14,107.77	194,127,078	38,528.31
08	14,229.80	14,107.77	14,208.43	205,884,193	38,803.22
11	14,208.04	13,933.06	13,996.86	177,510,022	38,225.41
12	13,996.19	13,720.10	13,801.40	229,062,796	37,694.88
13	13,947.19	13,805.06	13,833.64	231,915,982	37,784.76
14	13,848.19	13,781.82	13,821.80	184,423,453	37,752.50
15	13,889.49	13,798.26	13,799.12	183,799,371	37,690.53
18	13,798.46	13,584.55	13,702.33	183,792,852	37,426.44
19	13,756.33	13,671.73	13,736.83	174,828,456	37,520.77
20	13,921.27	13,737.96	13,897.48	177,964,152	37,961.37
21	13,977.51	13,898.34	13,972.02	145,015,081	38,181.78
25	13,997.90	13,888.27	13,907.32	191,204,728	38,004.98
26	13,926.15	13,871.24	13,909.10	193,028,597	38,009.84
27	13,942.95	13,770.81	13,892.57	244,523,502	37,976.21
28	13,936.68	13,848.32	13,894.40	175,469,010	37,991.49
29	13,945.70	13,861.43	13,944.79	197,906,612	38,129.27

**S&P/TSX COMPOSITE INDEX  
MONTHLY AND YEARLY HIGHS AND LOWS  
(Based on Closing Indices)**

	STOCK PRICE INDEX			TOTAL RETURN INDEX		
	HIGH	LOW	CLOSE	HIGH	LOW	CLOSE
<b>2011</b>						
April	14270.53	13702.33	13944.79	38971.39	37426.44	38129.27
March	14252.77	13524.82	14116.10	38799.44	36860.10	38522.86
February	14136.50	13680.29	14136.50	38474.92	37189.14	38474.92
January	13559.20	13245.12	13551.99	36840.37	35956.47	36840.37
<b>2010</b>						
December	13449.17	13148.35	13443.22	36484.70	35582.72	36480.62
November	13052.48	12602.23	12952.88	35252.98	34062.99	35046.90
October	12684.68	12322.94	12676.24	34235.40	33233.38	34235.40
September	12382.82	12003.78	12368.65	33370.11	32269.47	33331.94
August	11913.86	11523.60	11913.86	32022.80	30925.52	32022.80
July	11746.07	11092.50	11713.43	31490.12	29713.87	31426.67
June	11945.97	11263.83	11294.42	31930.09	30148.01	30229.89
May	12196.51	11405.95	11762.99	32501.35	30415.02	31395.79
2011	14270.53	13245.12	—	38971.39	35956.47	—
2010	13449.17	11092.50	13443.22	36484.70	29360.52	36480.62
2009	11779.73	7566.94	11746.11	31019.40	19470.04	31019.40
2008	15073.13	7724.76	8987.70	37790.95	19629.08	22967.98
2007	14625.76	12457.55	13883.06	36072.14	30133.14	34282.35
2006	13021.77	10904.34	12908.39	31432.44	25991.86	31213.49
2005	11296.29	9006.22	11272.26	26675.39	20887.58	26618.80
2004	9287.40	8123.50	9246.65	21525.63	18616.51	21444.89
2003	8260.54	6228.63	8220.89	18822.60	13976.20	18732.48
2002	7958.11	5695.33	6614.54	17512.70	12668.74	14782.01
2001	9348.36	6513.13	7688.41	20214.27	14230.24	16881.75
2000	11388.82	8114.24	8933.68	23467.32	17337.78	19309.35
1999	8472.58	6180.34	8413.75	18099.85	13031.00	17977.46
1998	7822.25	5336.15	6485.94	16261.84	11181.99	13648.84
1997	7209.93	5679.33	6699.44	14866.27	11612.33	13868.54
1996	6018.65	4739.70	5927.03	12220.97	9451.32	12061.95
1995	4745.21	3991.41	4713.54	9435.35	7779.60	9397.97
1994	4609.93	3959.85	4213.61	8811.04	7619.83	8205.73
1993	4329.88	3275.75	4321.43	8236.00	6067.86	8220.23
1992	3665.96	3195.39	3350.44	6571.79	5867.65	6201.72
1991	3604.09	3161.95	3512.36	6411.87	5456.12	6291.90
1990	4009.47	3009.91	3256.75	6658.86	5136.59	5617.01
1989	4037.83	3363.13	3969.79	6646.74	5372.92	6592.58
1988	3465.37	2977.87	3389.99	5451.86	4617.32	5431.68
1987	4112.86	2837.79	3160.05	6285.59	4359.60	4889.82
1986	3129.11	2754.06	3066.18	4626.07	4033.17	4618.32
1985	2900.60	2348.55	2900.60	4238.78	3316.26	4238.78

# S&P/TSX Composite Index

Symbol	Company Name	Relative Weight	GICS Code	Symbol	Company Name	Relative Weight	GICS Code
1 RY	Royal Bank of Canada	5.26%	40101010	39 CP	Canadian Pacific Railway Limited	0.66%	20304010
2 TD	Toronto-Dominion Bank (The)	4.47%	40101010	40 MG	Magna International Inc.	0.64%	25101010
3 SU	Suncor Energy Inc.	4.23%	10102010	41 BBD.B	Bombardier Inc. Cl 'B' Sv	0.63%	20101010
4 BNS	Bank of Nova Scotia (The)	3.84%	40101010	42 ELD	Eldorado Gold Corporation	0.60%	15104030
5 CNQ	Canadian Natural Resources Limited	3.01%	10102020	43 POW	Power Corporation of Canada Sv	0.59%	40301020
6 ABX	Barrick Gold Corporation	2.98%	15104030	44 SC	Shoppers Drug Mart Corporation	0.55%	30101010
7 POT	Potash Corporation of Saskatchewan Inc.	2.82%	15101030	45 YRI	Yamana Gold Inc.	0.55%	15104030
8 G	Goldcorp Inc.	2.61%	15104030	46 SNC	SNC - Lavalin Group Inc.	0.53%	20103010
9 BMO	Bank of Montreal	2.18%	40101010	47 THI	Tim Hortons Inc.	0.48%	25301040
10 CNR	Canadian National Railway Co.	2.09%	20304010	48 PRE	Pacific Rubiales Energy Corp. J	0.48%	10102020
11 CM	Canadian Imperial Bank of Commerce	2.00%	40101010	49 HSE	Husky Energy Inc.	0.47%	10102010
12 MFC	Manulife Financial Corporation	1.87%	40301020	50 FFH	Fairfax Financial Holdings Ltd. Sv	0.47%	40301030
13 TRP	Transcanada Corporation	1.76%	10102040	51 IVN	Ivanhoe Mines Ltd.	0.46%	15104020
14 CVE	Cenovus Energy Inc.	1.69%	10102010	52 IMG	Iamgold Corporation	0.46%	15104030
15 BCE	BCE Inc.	1.66%	50101020	53 ARX	Arc Resources Ltd.	0.45%	10102020
16 TCK.B	Teck Resources Limited Cl 'B' Sv	1.54%	15104020	54 PWF	Power Financial Corporation	0.44%	40301020
17 ENB	Enbridge Inc.	1.46%	10102040	55 EQN	Equinox Minerals Limited J	0.44%	15104020
18 ECA	Encana Corporation	1.45%	10102020	56 SJR.B	Shaw Communications Inc. Cl 'B' Nv	0.44%	25401025
19 TLM	Talisman Energy Inc.	1.44%	10102020	57 GWO	Great-West Lifeco Inc.	0.43%	40301020
20 RIM	Research In Motion Limited	1.33%	45201020	58 REI.UN	Riocan Real Estate Investment Trust Units	0.42%	40402060
21 SLF	Sun Life Financial Inc.	1.10%	40301020	59 BTE	Baytex Energy Corp.	0.41%	10102020
22 K	Kinross Gold Corporation	1.05%	15104030	60 SAP	Saputo Inc.	0.37%	30202030
23 BAM.A	Brookfield Asset Management Inc. Cl 'A' Lv	1.04%	40403010	61 TRE	Sino-Forest Corporation	0.36%	15105010
24 RCI.B	Rogers Communications Inc. Cl 'B' Nv	1.01%	50102010	62 FTS	Fortis Inc.	0.35%	55101010
25 T	Telus Corporation	1.00%	50101020	63 ERF	Enerplus Corporation	0.34%	10102020
26 COS	Canadian Oil Sands Limited	0.98%	10102020	64 IFC	Intact Financial Corporation	0.33%	40301040
27 VRX	Valeant Pharmaceuticals International, Inc.	0.94%	35202010	65 IGM	IGM Financial Inc.	0.31%	40203010
28 TRI	Thomson Reuters Corporation	0.89%	25401040	66 GIB.A	CGI Group Inc. Cl 'A' Sv	0.30%	45102010
29 SLW	Silver Wheaton Corp.	0.84%	15104040	67 MRU.A	Metro Inc. Cl 'A' Sv	0.29%	30101030
30 AGU	Agrium Inc.	0.84%	15101030	68 CTC.A	Canadian Tire Corporation, Limited Cl 'A' Nv	0.29%	25503020
31 NXY	Nexen Inc.	0.81%	10102020	69 FTT	Finning International Inc.	0.29%	20107010
32 NA	National Bank of Canada	0.79%	40101010	70 LUN	Lundin Mining Corporation	0.29%	15104020
33 IMO	Imperial Oil Ltd.	0.79%	10102010	71 TA	Transalta Corporation	0.29%	55105010
34 FM	First Quantum Minerals Ltd. J	0.72%	15104020	72 VET	Vermilion Energy Inc.	0.28%	10102020
35 CPG	Crescent Point Energy Corp.	0.72%	10102020	73 BPO	Brookfield Properties Corporation	0.27%	40403020
36 PWT	Penn West Petroleum Ltd.	0.69%	10102020	74 PGF	Pengrowth Energy Corporation	0.27%	10102020
37 AEM	Agnico-Eagle Mines Ltd.	0.69%	15104030	75 FNV	Franco-Nevada Corporation	0.27%	15104030
38 CCO	Cameco Corporation	0.68%	10102050	76 NGD	New Gold Inc. J	0.26%	15104030

Symbol	Company Name	Relative Weight	GICS Code	Symbol	Company Name	Relative Weight	GICS Code		
77	VT	Viterra Inc.	0.26%	30202010	118	S	Sherritt International Corporation	0.15%	15104020
78	OSK	Osisko Mining Corporation J	0.26%	15104030	119	MDA	Macdonald, Dettwiler And Associates Ltd.	0.14%	45103010
79	L	Loblaw Companies Limited	0.25%	30101030	120	PRQ	Progress Energy Resources Corp.	0.14%	10102020
80	IPL.UN	Inter Pipeline Fund Cl 'A' Lp Units	0.25%	10102040	121	ESI	Ensign Energy Services Inc.	0.14%	10101010
81	PD	Precision Drilling Corporation	0.24%	10101010	122	ACO.X	Atco Ltd. Cl 'I' Nv	0.14%	55103010
82	PPL	Pembina Pipeline Corporation	0.24%	10102040	123	DAY	Daylight Energy Ltd.	0.14%	10102020
83	BNP	Bonavista Energy Corporation	0.24%	10102020	124	PXX	Blackpearl Resources Inc. J	0.14%	10102020
84	PMG	Petrominerales Ltd.	0.23%	10102020	125	SVM	Silvercorp Metals Inc. J	0.14%	15104040
85	GIL	Gildan Activewear Inc.	0.23%	25203010	126	REF.UN	Canadian Real Estate Investment Trust Units	0.14%	40402010
86	PAA	Pan American Silver Corp.	0.23%	15104040	127	SMF	Semafo Inc. J	0.14%	15104030
87	EMA	Emera Incorporated	0.22%	55101010	128	ASR	Alacer Gold Corp. J	0.13%	15104030
88	CIX	CI Financial Corp.	0.22%	40203010	129	TIH	Toromont Industries Ltd.	0.13%	20106010
89	NKO	Niko Resources Ltd.	0.22%	10102020	130	VSN	Veresen Inc.	0.13%	10102040
90	BA	Bell Aliant Inc.	0.21%	50101020	131	NG	Novagold Resources Inc. J	0.13%	15104030
91	IAG	Industrial Alliance Insurance & Fin Serv Inc.	0.21%	40301020	132	PBG	Petrobank Energy And Resources Ltd.	0.13%	10102020
92	TCW	Trican Well Service Ltd.	0.21%	10101020	133	CWB	Canadian Western Bank	0.13%	40101015
93	IMN	Inmet Mining Corporation	0.21%	15104020	134	CWT.UN	Calloway Real Estate Investment Trust Units	0.13%	40402060
94	OTC	Open Text Corporation	0.20%	45101010	135	ALA	Altagas Ltd.	0.13%	10102040
95	ATD.B	Alimentation Couche-Tard Inc. Cl 'B' Sv	0.20%	30101030	136	CLS	Celestica Inc. Sv	0.13%	45203020
96	CLM	Consolidated Thompson Iron Mines Limited J	0.20%	15104050	137	BNK	Bankers Petroleum Ltd. J	0.13%	10102020
97	OCX	Onex Corporation Sv	0.20%	40201030	138	JE	Just Energy Group Inc.	0.13%	55103010
98	CAE	CAE Inc.	0.20%	20101010	139	WJA	Westjet Airlines Ltd.	0.13%	20302010
99	WN	Weston Ltd. George	0.20%	30101030	140	ACM.A	Astral Media Inc. Cl 'A' Nv	0.12%	25401020
100	SXC	SXC Health Solutions Corp.	0.20%	35103010	141	SCL.A	Shawcor Ltd. Cl 'A' Sv	0.12%	10101020
101	CU	Canadian Utilities Ltd. Cl 'A' Nv	0.20%	55103010	142	FR	First Majestic Silver Corp. J	0.12%	15104040
102	HR.UN	H&R Real Estate Investment Trust Stapled Unit	0.20%	40402010	143	MBT	Manitoba Telecom Services Inc.	0.12%	50101020
103	RBA	Ritchie Bros. Auctioneers Incorporated	0.19%	20201070	144	TCM	Thompson Creek Metals Company Inc.	0.12%	15104020
104	X	TMX Group Inc.	0.19%	40201040	145	BEI.UN	Boardwalk Real Estate Investment Trust Units	0.12%	40402050
105	QUX	Quadra Fnx Mining Ltd.	0.18%	15104020	146	AGI	Alamos Gold Inc. J	0.11%	15104030
106	BIN	Iesi-Bfc Ltd.	0.18%	20201050	147	NAE	Nal Energy Corporation	0.11%	10102020
107	MX	Methanex Corporation	0.18%	15101010	148	UUU	Uranium One Inc. J	0.11%	10102050
108	CG	Centerra Gold Inc.	0.17%	15104030	149	RON	Rona Inc.	0.11%	25504030
109	KEY	Keyera Corp.	0.17%	10102030	150	EGU	European Goldfields Limited J	0.11%	15104030
110	PEY	Peyto Exploration & Development Corp.	0.17%	10102020	151	HCG	Home Capital Group Inc.	0.11%	40102010
111	DGC	Detour Gold Corporation J	0.17%	15104030	152	LEG	Legacy Oil + Gas Inc.	0.11%	10102020
112	SSO	Silver Standard Resources Inc.	0.16%	15104040	153	GBU	Gabriel Resources Ltd. J	0.10%	15104030
113	HBM	Hudbay Minerals Inc.	0.16%	15104020	154	D.UN	Dundee Real Estate Investment Trust Units	0.10%	40402040
114	YLO	Yellow Media Inc.	0.15%	25401040	155	MTL	Mullen Group Ltd.	0.10%	10101020
115	AER	Groupe Aeroplan Inc.	0.15%	25401010	156	DC.A	Dundee Corporation Cl 'A' Sv	0.10%	40203010
116	PVE	Provident Energy Ltd.	0.15%	10102010	157	BIR	Birchcliff Energy Ltd.	0.10%	10102020
117	LIF.UN	Labrador Iron Ore Royalty Corp. Stapled Un	0.15%	15104050	158	QBR.B	Quebecor Inc. Cl 'B' Sv	0.10%	25401025

Symbol	Company Name	Relative Weight	GICS Code	Symbol	Company Name	Relative Weight	GICS Code
159 WFT	West Fraser Timber Co. Ltd.	0.10%	15105010	200 TGL	Transglobe Energy Corporation J	0.06%	10102020
160 RUS	Russel Metals Inc.	0.10%	20107010	201 CFP	Canfor Corporation	0.06%	15105010
161 WTE.UN	Westshore Terminals Invest Corp. Stapled Un	0.10%	20305030	202 TCL.A	Transcontinental Inc. Cl 'A' Sv	0.06%	20201010
162 AGF.B	AGF Management Ltd. Cl 'B' Nv	0.09%	40203010	203 PSI	Pason Systems Inc.	0.06%	10101020
163 CAR.UN	Cdn Apartment Prop Real Est Inv Tr Units	0.09%	40402050	204 LSG	Lake Shore Gold Corp. J	0.06%	15104030
164 GAM	Gammon Gold Inc. J	0.09%	15104030	205 NDM	Northern Dynasty Minerals Ltd. J	0.06%	15104020
165 PMZ.UN	Primaris Retail Real Estate Investment Tr Un	0.09%	40402060	206 AP.UN	Allied Properties Real Estate Invest Trust Un	0.06%	40402040
166 CGX	Cineplex Inc.	0.09%	25401030	207 ATP	Atlantic Power Corporation	0.06%	55105010
167 PBN	Petrobakken Energy Ltd.	0.09%	10102020	208 LNR	Linamar Corporation	0.06%	25101010
168 EMP.A	Empire Company Ltd. Cl 'A' Nv	0.09%	30101030	209 NWF	North West Company Inc. (The)	0.06%	30101030
169 CR	Crew Energy Inc.	0.09%	10102020	210 NVA	Nuvista Energy Ltd.	0.06%	10102020
170 CLT	Celtic Exploration Ltd.	0.09%	10102020	211 EXE.UN	Extendicare Real Estate Investment Trust Unit	0.06%	40402070
171 DOL	Dollarama Inc.	0.08%	25503020	212 FCR	First Capital Realty Inc.	0.06%	40403010
172 BRC.UN	Brookfield Renewable Power Fund Trust Units	0.08%	55105010	213 TKO	Taseko Mines Limited	0.06%	15104020
173 CJR.B	Corus Entertainment Inc. Cl 'B' Nv	0.08%	25401020	214 FSV	Firstservice Corporation Sv	0.06%	40403040
174 STN	Stantec Inc.	0.08%	20202020	215 CLC	CML Healthcare Inc.	0.06%	35102015
175 HW	Harry Winston Diamond Corporation	0.08%	15104040	216 DII.B	Dorel Industries Inc. Cl 'B' Sv	0.06%	25201020
176 AAV	Advantage Oil & Gas Ltd.	0.08%	10102020	217 RET.A	Reitman's (Canada) Ltd. Cl 'A' Nv	0.06%	25504010
177 TDG	Trinidad Drilling Ltd.	0.08%	10101010	218 DPM	Dundee Precious Metals Inc.	0.05%	15104040
178 CSH.UN	Chartwell Seniors Housing Reit Trust Units	0.08%	40402070	219 KGI	Kirkland Lake Gold Inc. J	0.05%	15104030
179 MFL	Minefinders Corporation Ltd. J	0.08%	15104030	220 RMX	Rubicon Minerals Corporation J	0.05%	15104030
180 PJC.A	Jean Coutu Group (Pjc) Inc. (The) Cl 'A' Sv	0.08%	30101010	221 CSI	Colossus Minerals Inc. J	0.05%	15104030
181 CUF.UN	Cominar Real Estate Investment Trust Units	0.07%	40402010	222 NGX	Northgate Minerals Corporation	0.05%	15104030
182 NSU	Nevsun Resources Ltd. J	0.07%	15104030	223 SVY	Savanna Energy Services Corp.	0.05%	10101010
183 NPI	Northland Power Inc.	0.07%	55105010	224 GMP	GMP Capital Inc.	0.05%	40203020
184 LB	Laurentian Bank of Canada	0.07%	40101015	225 BCB	Cott Corporation	0.05%	30201030
185 SPB	Superior Plus Corp.	0.07%	20107010	226 PDL	North American Palladium Ltd.	0.05%	15104040
186 NEM	Neo Material Technologies Inc.	0.07%	15101050	227 CCL.B	Ccl Industries Inc. Cl 'B' Nv	0.05%	15103010
187 TET	Trilogy Energy Corp.	0.07%	10102020	228 GCE	Grande Cache Coal Corporation J	0.05%	15104020
188 MIC	Genworth Mi Canada Inc.	0.07%	40102010	229 GSC	Golden Star Resources Ltd.	0.05%	15104030
189 GBG	Great Basin Gold Ltd. J	0.07%	15104030	230 CS	Capstone Mining Corp. J	0.05%	15104020
190 MDI	Major Drilling Group International Inc.	0.07%	15104020	231 GUY	Guyana Goldfields Inc. J	0.05%	15104030
191 WPT	Westport Innovations Inc.	0.07%	20106010	232 CPA.UN	Capital Power Income L.P. Units	0.05%	55105010
192 CFW	Calfrac Well Services Ltd.	0.06%	10101020	233 CGG	China Gold International Resources Corp Ltd J	0.05%	15104030
193 CCA	Cogeco Cable Inc. Sv	0.06%	25401025	234 NDN	Nordion Inc.	0.05%	35203010
194 ARZ	Aurizon Mines Ltd. J	0.06%	15104030	235 MFI	Maple Leaf Foods Inc.	0.05%	30202030
195 ELR	Eastern Platinum Limited J	0.06%	15104040	236 IE	Ivanhoe Energy Inc.	0.05%	10102020
196 AX.UN	Artis Real Estate Investment Trust Units	0.06%	40402010	237 OGC	Oceanagold Corporation	0.04%	15104030
197 TFI	Transforce Inc.	0.06%	20304020	238 ML	Mercator Minerals Ltd. J	0.04%	15104020
198 DH	Davis + Henderson Corporation	0.06%	40201020	239 DML	Denison Mines Corp.	0.04%	10102050
199 FRU	Freehold Royalties Ltd.	0.06%	10102020	240 FES	Flint Energy Services Ltd.	0.04%	10101020

Symbol	Company Name	Relative Weight	GICS Code
241 CHR.B	Chorus Aviation Inc. CI B Voting	0.04%	20302010
242 SGQ	Southgobi Resources Ltd. J	0.04%	10102050
243 FGL	Forzani Group Ltd. (The) CI 'A'	0.03%	25504040
244 ARE	Aecon Group Inc.	0.03%	20103010
245 PMT	Perpetual Energy Inc.	0.03%	10102020
246 AC.B	Air Canada Class 'B'	0.03%	20302010
247 JAG	Jaguar Mining Inc. J	0.03%	15104030
248 TRZ.B	Transat A.T. Inc. Class 'B'	0.03%	25301020

Symbol	Company Name	Relative Weight	GICS Code
--------	--------------	-----------------	-----------

# S&P/TSX 60 Index

	Symbol	Company Name	Relative Weight	GICS Code		Symbol	Company Name	Relative Weight	GICS Code
1	RY	Royal Bank of Canada	7.13%	40101010	37	CP	Canadian Pacific Railway Limited	0.89%	20304010
2	TD	Toronto-Dominion Bank (The)	6.07%	40101010	38	MG	Magna International Inc.	0.86%	25101010
3	SU	Suncor Energy Inc.	5.74%	10102010	39	BBD.B	Bombardier Inc. Cl 'B' Sv	0.86%	20101010
4	BNS	Bank of Nova Scotia (The)	5.21%	40101010	40	ELD	Eldorado Gold Corporation	0.81%	15104030
5	CNQ	Canadian Natural Resources Limited	4.08%	10102020	41	POW	Power Corporation of Canada Sv	0.80%	40301020
6	ABX	Barrick Gold Corporation	4.04%	15104030	42	SC	Shoppers Drug Mart Corporation	0.75%	30101010
7	POT	Potash Corporation of Saskatchewan Inc.	3.83%	15101030	43	YRI	Yamana Gold Inc.	0.75%	15104030
8	G	Goldcorp Inc.	3.54%	15104030	44	SNC	SNC - Lavalin Group Inc.	0.72%	20103010
9	BMO	Bank of Montreal	2.96%	40101010	45	THI	Tim Hortons Inc.	0.65%	25301040
10	CNR	Canadian National Railway Co.	2.83%	20304010	46	HSE	Husky Energy Inc.	0.64%	10102010
11	CM	Canadian Imperial Bank of Commerce	2.71%	40101010	47	IMG	Iamgold Corporation	0.62%	15104030
12	MFC	Manulife Financial Corporation	2.53%	40301020	48	ARX	Arc Resources Ltd.	0.61%	10102020
13	TRP	Transcanada Corporation	2.39%	10102040	49	SJR.B	Shaw Communications Inc. Cl 'B' Nv	0.59%	25401025
14	CVE	Genovus Energy Inc.	2.30%	10102010	50	SAP	Saputo Inc.	0.51%	30202030
15	BCE	BCE Inc.	2.25%	50101020	51	FTS	Fortis Inc.	0.48%	55101010
16	TCK.B	Teck Resources Limited Cl 'B' Sv	2.09%	15104020	52	ERF	Enerplus Corporation	0.46%	10102020
17	ENB	Enbridge Inc.	1.99%	10102040	53	MRU.A	Metro Inc. Cl 'A' Sv	0.40%	30101030
18	ECA	Encana Corporation	1.96%	10102020	54	CTC.A	Canadian Tire Corporation, Limited Cl 'A' Nv	0.40%	25503020
19	TLM	Talisman Energy Inc.	1.95%	10102020	55	TA	Transalta Corporation	0.39%	55105010
20	RIM	Research In Motion Limited	1.80%	45201020	56	L	Loblaw Companies Limited	0.34%	30101030
21	SLF	Sun Life Financial Inc.	1.49%	40301020	57	GIL	Gildan Activewear Inc.	0.31%	25203010
22	K	Kinross Gold Corporation	1.43%	15104030	58	IMN	Inmet Mining Corporation	0.28%	15104020
23	BAM.A	Brookfield Asset Management Inc. Cl 'A' Lv	1.42%	40403010	59	WN	Weston Ltd. George	0.27%	30101030
24	RCI.B	Rogers Communications Inc. Cl 'B' Nv	1.37%	50102010	60	YLO	Yellow Media Inc.	0.21%	25401040
25	T	Telus Corporation	1.35%	50101020					
26	COS	Canadian Oil Sands Limited	1.33%	10102020					
27	VRX	Valeant Pharmaceuticals International, Inc.	1.27%	35202010					
28	TRI	Thomson Reuters Corporation	1.21%	25401040					
29	AGU	Agrium Inc.	1.14%	15101030					
30	NXY	Nexen Inc.	1.10%	10102020					
31	NA	National Bank of Canada	1.07%	40101010					
32	IMO	Imperial Oil Ltd.	1.07%	10102010					
33	FM	First Quantum Minerals Ltd. J	0.97%	15104020					
34	PWT	Penn West Petroleum Ltd.	0.94%	10102020					
35	AEM	Agnico-Eagle Mines Ltd.	0.93%	15104030					
36	CCO	Cameco Corporation	0.92%	10102050					

# S&P/TSX Completion Index

Symbol	Company Name	Relative Weight	GICS Code	Symbol	Company Name	Relative Weight	GICS Code		
1	SLW	Silver Wheaton Corp.	3.20%	15104040	41	SXC	SXC Health Solutions Corp.	0.76%	35103010
2	CPG	Crescent Point Energy Corp.	2.72%	10102020	42	CU	Canadian Utilities Ltd. Cl 'A' Nv	0.76%	55103010
3	PRE	Pacific Rubiales Energy Corp. J	1.81%	10102020	43	HR.UN	H&R Real Estate Investment Trust Stapled Unit	0.75%	40402010
4	FFH	Fairfax Financial Holdings Ltd. Sv	1.77%	40301030	44	RBA	Ritchie Bros. Auctioneers Incorporated	0.74%	20201070
5	IVN	Ivanhoe Mines Ltd.	1.75%	15104020	45	X	TMX Group Inc.	0.71%	40201040
6	PWF	Power Financial Corporation	1.68%	40301020	46	QUX	Quadra Fnx Mining Ltd.	0.70%	15104020
7	EQN	Equinox Minerals Limited J	1.67%	15104020	47	BIN	Iesi-Bfc Ltd.	0.69%	20201050
8	GWO	Great-West Lifeco Inc.	1.64%	40301020	48	MX	Methanex Corporation	0.67%	15101010
9	REI.UN	Riocan Real Estate Investment Trust Units	1.58%	40402060	49	CG	Centerra Gold Inc.	0.65%	15104030
10	BTE	Baytex Energy Corp.	1.57%	10102020	50	KEY	Keyera Corp.	0.65%	10102030
11	TRE	Sino-Forest Corporation	1.36%	15105010	51	PEY	Peyto Exploration & Development Corp.	0.63%	10102020
12	IFC	Intact Financial Corporation	1.26%	40301040	52	DGC	Detour Gold Corporation J	0.63%	15104030
13	IGM	IGM Financial Inc.	1.19%	40203010	53	SSO	Silver Standard Resources Inc.	0.62%	15104040
14	GIB.A	CGI Group Inc. Cl 'A' Sv	1.14%	45102010	54	HBM	Hudbay Minerals Inc.	0.60%	15104020
15	FTT	Finning International Inc.	1.12%	20107010	55	AER	Groupe Aeroplan Inc.	0.57%	25401010
16	LUN	Lundin Mining Corporation	1.11%	15104020	56	PVE	Provident Energy Ltd.	0.56%	10102010
17	VET	Vermilion Energy Inc.	1.07%	10102020	57	LIF.UN	Labrador Iron Ore Royalty Corp. Stapled Un	0.56%	15104050
18	BPO	Brookfield Properties Corporation	1.04%	40403020	58	S	Sherritt International Corporation	0.56%	15104020
19	PGF	Pengrowth Energy Corporation	1.03%	10102020	59	MDA	Macdonald, Dettwiler And Associates Ltd.	0.55%	45103010
20	FNV	Franco-Nevada Corporation	1.01%	15104030	60	PRQ	Progress Energy Resources Corp.	0.55%	10102020
21	NGD	New Gold Inc. J	1.00%	15104030	61	ESI	Ensign Energy Services Inc.	0.54%	10101010
22	VT	Viterra Inc.	0.99%	30202010	62	ACO.X	Atco Ltd. Cl 'I' Nv	0.54%	55103010
23	OSK	Osisko Mining Corporation J	0.98%	15104030	63	DAY	Daylight Energy Ltd.	0.54%	10102020
24	IPL.UN	Inter Pipeline Fund Cl 'A' Lp Units	0.94%	10102040	64	PXX	Blackpearl Resources Inc. J	0.53%	10102020
25	PD	Precision Drilling Corporation	0.93%	10101010	65	SVM	Silvercorp Metals Inc. J	0.53%	15104040
26	PPL	Pembina Pipeline Corporation	0.90%	10102040	66	REF.UN	Canadian Real Estate Investment Trust Units	0.53%	40402010
27	BNP	Bonavista Energy Corporation	0.90%	10102020	67	SMF	Semafo Inc. J	0.51%	15104030
28	PMG	Petrominerales Ltd.	0.88%	10102020	68	ASR	Alacer Gold Corp. J	0.51%	15104030
29	PAA	Pan American Silver Corp.	0.87%	15104040	69	TIH	Toromont Industries Ltd.	0.51%	20106010
30	EMA	Emera Incorporated	0.85%	55101010	70	VSN	Veresen Inc.	0.51%	10102040
31	CIX	CI Financial Corp.	0.83%	40203010	71	NG	Novagold Resources Inc. J	0.51%	15104030
32	NKO	Niko Resources Ltd.	0.82%	10102020	72	PBG	Petrobank Energy And Resources Ltd.	0.50%	10102020
33	BA	Bell Aliant Inc.	0.81%	50101020	73	CWB	Canadian Western Bank	0.50%	40101015
34	IAG	Industrial Alliance Insurance & Fin Serv Inc.	0.80%	40301020	74	CWT.UN	Calloway Real Estate Investment Trust Units	0.50%	40402060
35	TCW	Trican Well Service Ltd.	0.79%	10101020	75	ALA	Altagas Ltd.	0.49%	10102040
36	OTC	Open Text Corporation	0.78%	45101010	76	CLS	Celestica Inc. Sv	0.48%	45203020
37	ATD.B	Alimentation Couche-Tard Inc. Cl 'B' Sv	0.77%	30101030	77	BNK	Bankers Petroleum Ltd. J	0.48%	10102020
38	CLM	Consolidated Thompson Iron Mines Limited J	0.77%	15104050	78	JE	Just Energy Group Inc.	0.48%	55103010
39	OCX	Onex Corporation Sv	0.77%	40201030	79	WJA	Westjet Airlines Ltd.	0.48%	20302010
40	CAE	CAE Inc.	0.77%	20101010	80	ACM.A	Astral Media Inc. Cl 'A' Nv	0.47%	25401020

Symbol	Company Name	Relative Weight	GICS Code	Symbol	Company Name	Relative Weight	GICS Code
81 SCL.A	Shawcor Ltd. Cl 'A' Sv	0.47%	10101020	124 LB	Laurentian Bank of Canada	0.28%	40101015
82 FR	First Majestic Silver Corp. J	0.46%	15104040	125 SPB	Superior Plus Corp.	0.28%	20107010
83 MBT	Manitoba Telecom Services Inc.	0.46%	50101020	126 NEM	Neo Material Technologies Inc.	0.28%	15101050
84 TCM	Thompson Creek Metals Company Inc.	0.45%	15104020	127 TET	Trilogy Energy Corp.	0.28%	10102020
85 BEI.UN	Boardwalk Real Estate Investment Trust Units	0.44%	40402050	128 MIC	Genworth Mi Canada Inc.	0.27%	40102010
86 AGI	Alamos Gold Inc. J	0.44%	15104030	129 GBG	Great Basin Gold Ltd. J	0.27%	15104030
87 NAE	Nal Energy Corporation	0.43%	10102020	130 MDI	Major Drilling Group International Inc.	0.27%	15104020
88 UUU	Uranium One Inc. J	0.43%	10102050	131 WPT	Westport Innovations Inc.	0.26%	20106010
89 RON	Rona Inc.	0.42%	25504030	132 CFW	Calfrac Well Services Ltd.	0.25%	10101020
90 EGU	European Goldfields Limited J	0.42%	15104030	133 CCA	Cogeco Cable Inc. Sv	0.25%	25401025
91 HCG	Home Capital Group Inc.	0.42%	40102010	134 ARZ	Aurizon Mines Ltd. J	0.25%	15104030
92 LEG	Legacy Oil + Gas Inc.	0.40%	10102020	135 ELR	Eastern Platinum Limited J	0.25%	15104040
93 GBU	Gabriel Resources Ltd. J	0.40%	15104030	136 AX.UN	Artis Real Estate Investment Trust Units	0.24%	40402010
94 D.UN	Dundee Real Estate Investment Trust Units	0.39%	40402040	137 TFI	Transforce Inc.	0.24%	20304020
95 MTL	Mullen Group Ltd.	0.39%	10101020	138 DH	Davis + Henderson Corporation	0.24%	40201020
96 DC.A	Dundee Corporation Cl 'A' Sv	0.39%	40203010	139 FRU	Freehold Royalties Ltd.	0.24%	10102020
97 BIR	Birchcliff Energy Ltd.	0.39%	10102020	140 TGL	Transglobe Energy Corporation J	0.24%	10102020
98 QBR.B	Quebecor Inc. Cl 'B' Sv	0.37%	25401025	141 CFP	Canfor Corporation	0.23%	15105010
99 WFT	West Fraser Timber Co. Ltd.	0.37%	15105010	142 TCL.A	Transcontinental Inc. Cl 'A' Sv	0.23%	20201010
100 RUS	Russel Metals Inc.	0.37%	20107010	143 PSI	Pason Systems Inc.	0.23%	10101020
101 WTE.UN	Westshore Terminals Invest Corp. Stapled Un	0.36%	20305030	144 LSG	Lake Shore Gold Corp. J	0.23%	15104030
102 AGF.B	AGF Management Ltd. Cl 'B' Nv	0.36%	40203010	145 NDM	Northern Dynasty Minerals Ltd. J	0.23%	15104020
103 CAR.UN	Cdn Apartment Prop Real Est Inv Tr Units	0.34%	40402050	146 AP.UN	Allied Properties Real Estate Invest Trust Un	0.23%	40402040
104 GAM	Gammon Gold Inc. J	0.34%	15104030	147 ATP	Atlantic Power Corporation	0.23%	55105010
105 PMZ.UN	Primaris Retail Real Estate Investment Tr Un	0.34%	40402060	148 LNR	Linamar Corporation	0.23%	25101010
106 CGX	Cineplex Inc.	0.33%	25401030	149 NWF	North West Company Inc. (The)	0.23%	30101030
107 PBN	Petrobakken Energy Ltd.	0.33%	10102020	150 NVA	Nuvista Energy Ltd.	0.22%	10102020
108 EMP.A	Empire Company Ltd. Cl 'A' Nv	0.33%	30101030	151 EXE.UN	Extendicare Real Estate Investment Trust Unit	0.22%	40402070
109 CR	Crew Energy Inc.	0.33%	10102020	152 FCR	First Capital Realty Inc.	0.22%	40403010
110 CLT	Celtic Exploration Ltd.	0.33%	10102020	153 TKO	Taseko Mines Limited	0.22%	15104020
111 DOL	Dollarama Inc.	0.32%	25503020	154 FSV	Firstservice Corporation Sv	0.22%	40403040
112 BRC.UN	Brookfield Renewable Power Fund Trust Units	0.32%	55105010	155 CLC	CML Healthcare Inc.	0.22%	35102015
113 CJR.B	Corus Entertainment Inc. Cl 'B' Nv	0.32%	25401020	156 DII.B	Dorel Industries Inc. Cl 'B' Sv	0.22%	25201020
114 STN	Stantec Inc.	0.32%	20202020	157 RET.A	Reitman's (Canada) Ltd. Cl 'A' Nv	0.21%	25504010
115 HW	Harry Winston Diamond Corporation	0.32%	15104040	158 DPM	Dundee Precious Metals Inc.	0.21%	15104040
116 AAV	Advantage Oil & Gas Ltd.	0.31%	10102020	159 KGI	Kirkland Lake Gold Inc. J	0.20%	15104030
117 TDG	Trinidad Drilling Ltd.	0.31%	10101010	160 RMX	Rubicon Minerals Corporation J	0.20%	15104030
118 CSH.UN	Chartwell Seniors Housing Reit Trust Units	0.30%	40402070	161 CSI	Colossus Minerals Inc. J	0.20%	15104030
119 MFL	Minefinders Corporation Ltd. J	0.30%	15104030	162 NGX	Northgate Minerals Corporation	0.19%	15104030
120 PJC.A	Jean Coutu Group (Pjc) Inc. (The) Cl 'A' Sv	0.29%	30101010	163 SVY	Savanna Energy Services Corp.	0.19%	10101010
121 CUF.UN	Cominar Real Estate Investment Trust Units	0.29%	40402010	164 GMP	GMP Capital Inc.	0.19%	40203020
122 NSU	Newsun Resources Ltd. J	0.28%	15104030	165 BCB	Cott Corporation	0.19%	30201030
123 NPI	Northland Power Inc.	0.28%	55105010	166 PDL	North American Palladium Ltd.	0.19%	15104040

Symbol	Company Name	Relative Weight	GICS Code
167 CCL.B	Ccl Industries Inc. Cl 'B' Nv	0.19%	15103010
168 GCE	Grande Cache Coal Corporation J	0.19%	15104020
169 GSC	Golden Star Resources Ltd.	0.19%	15104030
170 CS	Capstone Mining Corp. J	0.18%	15104020
171 GUY	Guyana Goldfields Inc. J	0.18%	15104030
172 CPA.UN	Capital Power Income L.P. Units	0.18%	55105010
173 CGG	China Gold International Resources Corp Ltd J	0.18%	15104030
174 NDN	Nordion Inc.	0.18%	35203010
175 MFI	Maple Leaf Foods Inc.	0.17%	30202030
176 IE	Ivanhoe Energy Inc.	0.17%	10102020
177 OGC	Oceanagold Corporation	0.17%	15104030
178 ML	Mercator Minerals Ltd. J	0.16%	15104020
179 DML	Denison Mines Corp.	0.16%	10102050
180 FES	Flint Energy Services Ltd.	0.15%	10101020
181 CHR.B	Chorus Aviation Inc. Cl B Voting	0.15%	20302010
182 SGQ	Southgobi Resources Ltd. J	0.15%	10102050
183 FGL	Forzani Group Ltd. (The) Cl 'A'	0.13%	25504040
184 ARE	Aecon Group Inc.	0.13%	20103010
185 PMT	Perpetual Energy Inc.	0.11%	10102020
186 AC.B	Air Canada Class 'B'	0.11%	20302010
187 JAG	Jaguar Mining Inc. J	0.10%	15104030
188 TRZ.B	Transat A.T. Inc. Class 'B'	0.10%	25301020

Symbol	Company Name	Relative Weight	GICS Code
--------	--------------	-----------------	-----------

# S&P/TSX SmallCap Index

Symbol	Company Name	Relative Weight	GICS Code	Symbol	Company Name	Relative Weight	GICS Code		
1	SSO	Silver Standard Resources Inc.	1.70%	15104040	41	MDI	Major Drilling Group International Inc.	0.73%	15104020
2	LIF.UN	Labrador Iron Ore Royalty Corp. Stapled Un	1.54%	15104050	42	WPT	Westport Innovations Inc.	0.73%	20106010
3	PXX	Blackpearl Resources Inc. J	1.46%	10102020	43	CFW	Calfrac Well Services Ltd.	0.68%	10101020
4	SVM	Silvercorp Metals Inc. J	1.46%	15104040	44	CCA	Cogeco Cable Inc. Sv	0.68%	25401025
5	ASR	Alacer Gold Corp. J	1.40%	15104030	45	ARZ	Aurizon Mines Ltd. J	0.68%	15104030
6	FR	First Majestic Silver Corp. J	1.27%	15104040	46	ELR	Eastern Platinum Limited J	0.68%	15104040
7	TCM	Thompson Creek Metals Company Inc.	1.25%	15104020	47	AX.UN	Artis Real Estate Investment Trust Units	0.67%	40402010
8	HCG	Home Capital Group Inc.	1.15%	40102010	48	TFI	Transforce Inc.	0.67%	20304020
9	IMX	IMAX Corporation	1.15%	25401030	49	DH	Davis + Henderson Corporation	0.66%	40201020
10	D.UN	Dundee Real Estate Investment Trust Units	1.08%	40402040	50	FRU	Freehold Royalties Ltd.	0.65%	10102020
11	MTL	Mullen Group Ltd.	1.08%	10101020	51	TGL	Transglobe Energy Corporation J	0.65%	10102020
12	DC.A	Dundee Corporation Cl 'A' Sv	1.07%	40203010	52	CFP	Canfor Corporation	0.64%	15105010
13	BIR	Birchcliff Energy Ltd.	1.06%	10102020	53	TCL.A	Transcontinental Inc. Cl 'A' Sv	0.64%	20201010
14	WFT	West Fraser Timber Co. Ltd.	1.02%	15105010	54	PSI	Pason Systems Inc.	0.64%	10101020
15	RUS	Russel Metals Inc.	1.01%	20107010	55	LSG	Lake Shore Gold Corp. J	0.64%	15104030
16	WTE.UN	Westshore Terminals Invest Corp. Stapled Un	1.00%	20305030	56	NDM	Northern Dynasty Minerals Ltd. J	0.64%	15104020
17	AGF.B	AGF Management Ltd. Cl 'B' Nv	0.99%	40203010	57	AP.UN	Allied Properties Real Estate Invest Trust Un	0.63%	40402040
18	CAR.UN	Cdn Apartment Prop Real Est Inv Tr Units	0.94%	40402050	58	LNR	Linamar Corporation	0.62%	25101010
19	GAM	Gammon Gold Inc. J	0.93%	15104030	59	NWF	North West Company Inc. (The)	0.62%	30101030
20	PMZ.UN	Primaris Retail Real Estate Investment Tr Un	0.93%	40402060	60	NVA	Nuvista Energy Ltd.	0.61%	10102020
21	CGX	Cineplex Inc.	0.92%	25401030	61	EXE.UN	Extendicare Real Estate Investment Trust Unit	0.61%	40402070
22	CR	Crew Energy Inc.	0.90%	10102020	62	TKO	Taseko Mines Limited	0.61%	15104020
23	CLT	Celtic Exploration Ltd.	0.90%	10102020	63	FSV	Firstservice Corporation Sv	0.60%	40403040
24	CJR.B	Corus Entertainment Inc. Cl 'B' Nv	0.89%	25401020	64	CLC	CML Healthcare Inc.	0.59%	35102015
25	STN	Stantec Inc.	0.88%	20202020	65	DII.B	Dorel Industries Inc. Cl 'B' Sv	0.59%	25201020
26	HW	Harry Winston Diamond Corporation	0.88%	15104040	66	RET.A	Reitman's (Canada) Ltd. Cl 'A' Nv	0.58%	25504010
27	SEA	Seabridge Gold Inc. J	0.86%	15104030	67	EDR	Endeavour Silver Corp. J	0.57%	15104040
28	AAV	Advantage Oil & Gas Ltd.	0.86%	10102020	68	DPM	Dundee Precious Metals Inc.	0.57%	15104040
29	TDG	Trinidad Drilling Ltd.	0.85%	10101010	69	KGI	Kirkland Lake Gold Inc. J	0.56%	15104030
30	CSH.UN	Chartwell Seniors Housing Reit Trust Units	0.82%	40402070	70	RMX	Rubicon Minerals Corporation J	0.55%	15104030
31	MFL	Minefinders Corporation Ltd. J	0.82%	15104030	71	CSI	Colossus Minerals Inc. J	0.54%	15104030
32	PJC.A	Jean Coutu Group (Pjc) Inc. (The) Cl 'A' Sv	0.79%	30101010	72	BNE	Bonterra Energy Corp.	0.53%	10102020
33	CUF.UN	Cominar Real Estate Investment Trust Units	0.78%	40402010	73	NGX	Northgate Minerals Corporation	0.53%	15104030
34	NSU	Nevsun Resources Ltd. J	0.78%	15104030	74	BTO	B2gold Corp. J	0.53%	15104030
35	NPI	Northland Power Inc.	0.78%	55105010	75	NPR.UN	Northern Property RI Estate Invest Stapled Un	0.53%	40402050
36	LB	Laurentian Bank of Canada	0.78%	40101015	76	SVY	Savanna Energy Services Corp.	0.53%	10101010
37	SPB	Superior Plus Corp.	0.77%	20107010	77	GMP	GMP Capital Inc.	0.52%	40203020
38	NEM	Neo Material Technologies Inc.	0.76%	15101050	78	AVL	Avalon Rare Metals Inc. J	0.52%	15104020
39	TET	Trilogy Energy Corp.	0.76%	10102020	79	BCB	Cott Corporation	0.52%	30201030
40	GBG	Great Basin Gold Ltd. J	0.73%	15104030	80	PDL	North American Palladium Ltd.	0.52%	15104040

Symbol	Company Name	Relative Weight	GICS Code	Symbol	Company Name	Relative Weight	GICS Code
81 CCL.B	CCL Industries Inc. Cl 'B' Nv	0.52%	15103010	122 ARE	Aecon Group Inc.	0.35%	20103010
82 GCE	Grande Cache Coal Corporation J	0.51%	15104020	123 BDT	Bird Construction Inc.	0.34%	20103010
83 GSC	Golden Star Resources Ltd.	0.51%	15104030	124 ATA	ATS Automation Tooling Systems Inc.	0.33%	20106020
84 CPX	Capital Power Corporation	0.51%	55105010	125 TOT	Total Energy Services Inc.	0.32%	10101020
85 CS	Capstone Mining Corp. J	0.50%	15104020	126 SCP	Sprott Resource Corp.	0.32%	15104020
86 TS.B	Torstar Corp. Cl 'B' Nv	0.49%	25401040	127 MSI	Morneau Shepell Inc.	0.32%	20202010
87 GUY	Guyana Goldfields Inc. J	0.49%	15104030	128 MAG	Mag Silver Corp. J	0.32%	15104040
88 CPA.UN	Capital Power Income L.P. Units	0.49%	55105010	129 KMP	Killam Properties Inc. J	0.32%	40403020
89 CGG	China Gold International Resources Corp Ltd J	0.48%	15104030	130 PMT	Perpetual Energy Inc.	0.31%	10102020
90 BKX	BNK Petroleum Inc. J	0.48%	10102020	131 CAS	Cascades Inc.	0.31%	15103020
91 NDN	Nordion Inc.	0.48%	35203010	132 III	Imperial Metals Corp.	0.31%	15104020
92 MFI	Maple Leaf Foods Inc.	0.48%	30202030	133 ORA	Aura Minerals Inc. J	0.31%	15104020
93 IE	Ivanhoe Energy Inc.	0.47%	10102020	134 WJX	Wajax Corporation	0.31%	20107010
94 POU	Paramount Resources Ltd. Class A	0.47%	10102020	135 GC	Great Canadian Gaming Corporation	0.31%	25301010
95 OGC	Oceanagold Corporation	0.47%	15104030	136 AC.B	Air Canada Class 'B'	0.30%	20302010
96 WIN	Wi-Lan Inc.	0.47%	45201020	137 FTP	Fortress Paper Ltd. Class 'A'	0.30%	15105020
97 ML	Mercator Minerals Ltd. J	0.45%	15104020	138 ENF	Enbridge Income Fund Holdings Inc. Ordinary	0.30%	10102040
98 DML	Denison Mines Corp.	0.43%	10102050	139 CRR.UN	Crombie Real Estate Investment Trust Units	0.30%	40402010
99 KGN	Keegan Resources Inc. J	0.43%	15104030	140 CSE	Capstone Infrastructure Corporation	0.30%	55105010
100 PG	Premier Gold Mines Limited J	0.43%	15104030	141 CMK	Cline Mining Corporation J	0.30%	15104020
101 FES	Flint Energy Services Ltd.	0.43%	10101020	142 AZC	Augusta Resource Corporation J	0.29%	15104020
102 PKI	Parkland Fuel Corporation	0.42%	10102030	143 JAG	Jaguar Mining Inc. J	0.29%	15104030
103 CF	Canaccord Financial Inc.	0.42%	40203020	144 TRZ.B	Transat A.T. Inc. Class 'B'	0.29%	25301020
104 CHR.B	Chorus Aviation Inc. Cl B Voting	0.42%	20302010	145 CHE.UN	Chemtrade Logistics Income Fund Units	0.29%	15101010
105 INN.UN	Innvest Real Estate Invest Tr Stapled Units	0.42%	40402070	146 ATB	Atrium Innovations Inc.	0.28%	30302010
106 CFX	Canfor Pulp Products Inc.	0.41%	15105020	147 PNP	Pinetree Capital Ltd. J	0.28%	40203010
107 MRE	Martinrea International Inc.	0.40%	25101010	148 PCE	Pace Oil And Gas Ltd.	0.27%	10102020
108 AVM	Anvil Mining Limited	0.40%	15104020	149 RSI	Rogers Sugar Inc.	0.26%	30202030
109 NGL	Angle Energy Inc.	0.40%	10102020	150 CDH	Corridor Resources Inc.	0.26%	10102020
110 AFN	AG Growth International Inc.	0.40%	20106010	151 DSG	Descartes Systems Group Inc. (The)	0.25%	45103010
111 ZAR	Zargon Oil & Gas Ltd.	0.39%	10102020	152 BDI	Black Diamond Group Limited	0.25%	20201070
112 CLL	Connacher Oil And Gas Limited	0.39%	10102010	153 ECI	Enercare Inc.	0.25%	25302020
113 BAA	Banro Corporation J	0.38%	15104030	154 FEL	Fairborne Energy Ltd. J	0.24%	10102020
114 INE	Innergex Renewable Energy Inc.	0.38%	55105010	155 TBE	Twin Butte Energy Ltd. J	0.24%	10102020
115 TWF.UN	Timberwest Forest Corp. Stapled Units	0.37%	15105010	156 WRK.UN	Whiterock Real Estate Investment Trust Un	0.24%	40402040
116 CUM	Copper Mountain Mining Corporation J	0.37%	15104020	157 MSD	Mosaid Technologies Inc.	0.23%	45301010
117 AQN	Algonquin Power & Utilities Corp.	0.36%	55105010	158 SW	Sierra Wireless, Inc.	0.23%	45201020
118 NAL	Newalta Corporation	0.35%	20201050	159 PTM	Platinum Group Metals Ltd. J	0.23%	15104040
119 GNV	Genivar Inc.	0.35%	20103010	160 BWR	Breakwater Resources Ltd.	0.22%	15104020
120 FGL	Forzani Group Ltd. (The) Cl 'A'	0.35%	25504040	161 CUQ	Churchill Corporation (The) Cl 'A'	0.22%	20103010
121 BXE	Bellatrix Exploration Ltd.	0.35%	10102020	162 CET	Cathedral Energy Services Ltd.	0.22%	10101010

Symbol	Company Name	Relative Weight	GICS Code
163 ALS	Altius Minerals Corporation	0.21%	15104020
164 SVC	Sandvine Corporation J	0.21%	45201020
165 ARF	Armtec Infrastructure Inc.	0.21%	20106020
166 MEL	Midway Energy Ltd.	0.20%	10102020
167 COM	Cardiome Pharma Corp.	0.20%	35202010
168 DEE	Delphi Energy Corp.	0.20%	10102020
169 LIQ	Liquor Stores N.A. Ltd.	0.20%	30101030
170 VRO	Vero Energy Inc.	0.19%	10102020
171 ZL	Zarlink Semiconductor Inc.	0.19%	45301020
172 AAH	Aastra Technologies Limited	0.19%	45201020
173 GS	Gluskin Sheff + Associates Inc. Sv	0.19%	40203010
174 GSL	Greystar Resources Ltd. J	0.19%	15104030
175 NBD	Norbord Inc.	0.18%	15105010
176 VIC	Vicwest Inc.	0.18%	20102010
177 TH	Theratechnologies Inc.	0.17%	35201010
178 GLG	Glg Life Tech Corporation J	0.17%	30202030
179 QEC	Questerre Energy Corporation J	0.17%	10102020
180 GW	Garda World Security Corporation Cl 'A' J	0.16%	20201080
181 VNP	5n Plus Inc.	0.16%	45203015
182 DWI	Dragonwave Inc.	0.16%	45201020
183 GO	Galleon Energy Inc. Class 'A'	0.15%	10102020
184 MGO	Migao Corporation	0.15%	15101030
185 CDV	Com Dev International Ltd.	0.14%	45201020
186 RCM	Ruggedcom Inc.	0.14%	45201020
187 GCL	Colabor Group Inc.	0.14%	30101020
188 DM	Duluth Metals Limited J	0.14%	15104020
189 CWX	Canwel Building Materials Group Ltd.	0.13%	20107010
190 CRK	Crocodile Gold Corp. J	0.13%	15104030
191 VTR	Volta Resources Inc. J	0.13%	15104030
192 HF	Hanfeng Evergreen Inc.	0.12%	15101030
193 CSF	Cash Store Financial Services Inc. (The) J	0.12%	40202010
194 BWC	Bridgewater Systems Corporation	0.12%	45103020
195 AXL	Anderson Energy Ltd.	0.12%	10102020
196 MXY	Magma Energy Corp. J	0.12%	55105010
197 OEX	Orleans Energy Ltd. J	0.11%	10102020
198 PGD	Peregrine Diamonds Ltd. J	0.11%	15104040
199 EPS	Epsilon Energy Ltd. J	0.11%	10102020
200 DGI.UN	Data Group Income Fund (The) Units	0.10%	20201010
201 FSY	Forsys Metals Corp. J	0.09%	10102050
202 DMM	Dynasty Metals & Mining Inc. J	0.07%	15104030
203 RPG	Ram Power, Corp. J	0.07%	55105010
204 CNH	Cinch Energy Corp. J	0.07%	10102020

Symbol	Company Name	Relative Weight	GICS Code
205 RVX	Resverlogix Corp. J	0.05%	35201010
206 OPC	Opti Canada Inc.	0.04%	10102020

# S&P/TSX Capped Sector Indices

Symbol	Company Name	Relative Weight	GICS Code	Symbol	Company Name	Relative Weight	GICS Code
<b>Consumer Discretionary</b>							
1 TRI	Thomson Reuters Corporation	21.41%	25401040	4 ECA	Encana Corporation	6.49%	10102020
2 MG	Magna International Inc.	15.32%	25101010	5 TLM	Talisman Energy Inc.	6.46%	10102020
3 THI	Tim Hortons Inc.	11.54%	25301040	6 COS	Canadian Oil Sands Limited	4.38%	10102020
4 SJR.B	Shaw Communications Inc. Cl 'B' Nv	10.53%	25401025	7 NXY	Nexen Inc.	3.65%	10102020
5 CTC.A	Canadian Tire Corporation, Limited Cl 'A' Nv	7.09%	25503020	8 IMO	Imperial Oil Ltd.	3.53%	10102010
6 GIL	Gildan Activewear Inc.	5.48%	25203010	9 CPG	Crescent Point Energy Corp.	3.21%	10102020
7 YLO	Yellow Media Inc.	3.65%	25401040	10 PWT	Penn West Petroleum Ltd.	3.11%	10102020
8 AER	Groupe Aeroplan Inc.	3.60%	25401010	11 PRE	Pacific Rubiales Energy Corp. J	2.13%	10102020
9 ACM.A	Astral Media Inc. Cl 'A' Nv	3.00%	25401020	12 HSE	Husky Energy Inc.	2.12%	10102010
10 RON	Rona Inc.	2.68%	25504030	13 ARX	Arc Resources Ltd.	2.02%	10102020
11 QBR.B	Quebecor Inc. Cl 'B' Sv	2.35%	25401025	14 BTE	Baytex Energy Corp.	1.85%	10102020
12 CGX	Cineplex Inc.	2.11%	25401030	15 ERF	Enerplus Corporation	1.52%	10102020
13 DOL	Dollarama Inc.	2.05%	25503020	16 VET	Vermilion Energy Inc.	1.26%	10102020
14 CJR.B	Corus Entertainment Inc. Cl 'B' Nv	2.04%	25401020	17 PGF	Pengrowth Energy Corporation	1.21%	10102020
15 CCA	Cogeco Cable Inc. Sv	1.56%	25401025	18 PD	Precision Drilling Corporation	1.10%	10101010
16 LNR	Linamar Corporation	1.43%	25101010	19 BNP	Bonavista Energy Corporation	1.06%	10102020
17 DII.B	Dorel Industries Inc. Cl 'B' Sv	1.36%	25201020	20 PMG	Petrominerales Ltd.	1.04%	10102020
18 RET.A	Reitman's (Canada) Ltd. Cl 'A' Nv	1.34%	25504010	21 NKO	Niko Resources Ltd.	0.97%	10102020
19 FGL	Forzani Group Ltd. (The) Cl 'A'	0.80%	25504040	22 TCW	Trican Well Service Ltd.	0.94%	10101020
20 TRZ.B	Transat A.T. Inc. Class 'B'	0.66%	25301020	23 PEY	Peyto Exploration & Development Corp.	0.74%	10102020
<b>Consumer Staples</b>				24 PVE	Provident Energy Ltd.	0.66%	10102010
1 SC	Shoppers Drug Mart Corporation	22.56%	30101010	25 PRQ	Progress Energy Resources Corp.	0.64%	10102020
2 SAP	Saputo Inc.	15.27%	30202030	26 ESI	Ensign Energy Services Inc.	0.64%	10101010
3 MRU.A	Metro Inc. Cl 'A' Sv	12.02%	30101030	27 DAY	Daylight Energy Ltd.	0.63%	10102020
4 VT	Viterra Inc.	10.64%	30202010	28 PXX	Blackpearl Resources Inc. J	0.63%	10102020
5 L	Loblaw Companies Limited	10.14%	30101030	29 PBG	Petrobank Energy And Resources Ltd.	0.59%	10102020
6 ATD.B	Alimentation Couche-Tard Inc. Cl 'B' Sv	8.29%	30101030	30 BNK	Bankers Petroleum Ltd. J	0.57%	10102020
7 WN	Weston Ltd. George	8.15%	30101030	31 SCL.A	Shawcor Ltd. Cl 'A' Sv	0.55%	10101020
8 EMP.A	Empire Company Ltd. Cl 'A' Nv	3.55%	30101030	32 NAE	Nal Energy Corporation	0.51%	10102020
9 PJC.A	Jean Coutu Group (Pjc) Inc. (The) Cl 'A' Sv	3.09%	30101010	33 LEG	Legacy Oil + Gas Inc.	0.47%	10102020
10 NWF	North West Company Inc. (The)	2.41%	30101030	34 MTL	Mullen Group Ltd.	0.46%	10101020
11 BCB	Cott Corporation	2.01%	30201030	35 BIR	Birchcliff Energy Ltd.	0.45%	10102020
12 MFI	Maple Leaf Foods Inc.	1.87%	30202030	36 PBN	Petrobakken Energy Ltd.	0.39%	10102020
<b>Energy</b>				37 CR	Crew Energy Inc.	0.39%	10102020
1 SU	Suncor Energy Inc.	18.98%	10102010	38 CLT	Celtic Exploration Ltd.	0.38%	10102020
2 CNQ	Canadian Natural Resources Limited	13.50%	10102020	39 AAV	Advantage Oil & Gas Ltd.	0.37%	10102020
3 CVE	Cenovus Energy Inc.	7.59%	10102010	40 TDG	Trinidad Drilling Ltd.	0.36%	10101010
				41 TET	Trilogy Energy Corp.	0.33%	10102020
				42 CFW	Calfrac Well Services Ltd.	0.29%	10101020
				43 FRU	Freehold Royalties Ltd.	0.28%	10102020

	Symbol	Company Name	Relative Weight	GICS Code
44	TGL	Transglobe Energy Corporation J	0.28%	10102020
45	PSI	Pason Systems Inc.	0.27%	10101020
46	NVA	Nuvista Energy Ltd.	0.26%	10102020
47	SVY	Savanna Energy Services Corp.	0.23%	10101010
48	IE	Ivanhoe Energy Inc.	0.20%	10102020
49	FES	Flint Energy Services Ltd.	0.18%	10101020
50	PMT	Perpetual Energy Inc.	0.13%	10102020

#### Financials

1	RY	Royal Bank of Canada	20.54%	40101010
2	TD	Toronto-Dominion Bank (The)	17.47%	40101010
3	BNS	Bank of Nova Scotia (The)	15.01%	40101010
4	BMO	Bank of Montreal	8.52%	40101010
5	CM	Canadian Imperial Bank of Commerce	7.81%	40101010
6	MFC	Manulife Financial Corporation	7.29%	40301020
7	SLF	Sun Life Financial Inc.	4.29%	40301020
8	NA	National Bank of Canada	3.10%	40101010
9	POW	Power Corporation of Canada Sv	2.32%	40301020
10	FFH	Fairfax Financial Holdings Ltd. Sv	1.82%	40301030
11	PWF	Power Financial Corporation	1.72%	40301020
12	GWO	Great-West Lifeco Inc.	1.68%	40301020
13	IFC	Intact Financial Corporation	1.30%	40301040
14	IGM	IGM Financial Inc.	1.22%	40203010
15	CIX	CI Financial Corp.	0.85%	40203010
16	IAG	Industrial Alliance Insurance & Fin Serv Inc.	0.82%	40301020
17	OCX	Onex Corporation Sv	0.79%	40201030
18	X	TMX Group Inc.	0.73%	40201040
19	CWB	Canadian Western Bank	0.51%	40101015
20	HCG	Home Capital Group Inc.	0.43%	40102010
21	DC.A	Dundee Corporation Cl 'A' Sv	0.40%	40203010
22	AGF.B	AGF Management Ltd. Cl 'B' Nv	0.37%	40203010
23	LB	Laurentian Bank of Canada	0.29%	40101015
24	MIC	Genworth Mi Canada Inc.	0.28%	40102010
25	DH	Davis + Henderson Corporation	0.25%	40201020
26	GMP	GMP Capital Inc.	0.19%	40203020

#### Health Care

1	VRX	Valeant Pharmaceuticals International, Inc.	30.41%	35202010
2	SXC	SXC Health Solutions Corp.	24.82%	35103010
3	CLC	CML Healthcare Inc.	22.46%	35102015
4	NDN	Nordion Inc.	22.31%	35203010

	Symbol	Company Name	Relative Weight	GICS Code
<b>Industrials</b>				
1	CNR	Canadian National Railway Co.	24.32%	20304010
2	CP	Canadian Pacific Railway Limited	13.79%	20304010
3	BBD.B	Bombardier Inc. Cl 'B' Sv	13.32%	20101010
4	SNC	SNC - Lavalin Group Inc.	11.23%	20103010
5	FTT	Finning International Inc.	6.18%	20107010
6	CAE	CAE Inc.	4.25%	20101010
7	RBA	Ritchie Bros. Auctioneers Incorporated	4.08%	20201070
8	BIN	Iesi-Bfc Ltd.	3.80%	20201050
9	TIH	Toromont Industries Ltd.	2.81%	20106010
10	WJA	Westjet Airlines Ltd.	2.65%	20302010
11	RUS	Russel Metals Inc.	2.03%	20107010
12	WTE.UN	Westshore Terminals Invest Corp. Stapled Un	2.01%	20305030
13	STN	Stantec Inc.	1.77%	20202020
14	SPB	Superior Plus Corp.	1.55%	20107010
15	WPT	Westport Innovations Inc.	1.46%	20106010
16	TFI	Transforce Inc.	1.34%	20304020
17	TCL.A	Transcontinental Inc. Cl 'A' Sv	1.29%	20201010
18	CHR.B	Chorus Aviation Inc. Cl B Voting	0.84%	20302010
19	ARE	Aecon Group Inc.	0.69%	20103010
20	AC.B	Air Canada Class 'B'	0.61%	20302010

#### Information Technology

1	GIB.A	CGI Group Inc. Cl 'A' Sv	27.63%	45102010
2	OTC	Open Text Corporation	22.93%	45101010
3	RIM	Research In Motion Limited	18.96%	45201020
4	MDA	Macdonald, Dettwiler And Associates Ltd.	16.25%	45103010
5	CLS	Celestica Inc. Sv	14.23%	45203020

#### Materials

1	ABX	Barrick Gold Corporation	13.07%	15104030
2	POT	Potash Corporation of Saskatchewan Inc.	12.37%	15101030
3	G	Goldcorp Inc.	11.44%	15104030
4	TCK.B	Teck Resources Limited Cl 'B' Sv	6.75%	15104020
5	K	Kinross Gold Corporation	4.61%	15104030
6	SLW	Silver Wheaton Corp.	3.68%	15104040
7	AGU	Agrium Inc.	3.67%	15101030
8	FM	First Quantum Minerals Ltd. J	3.15%	15104020
9	AEM	Agnico-Eagle Mines Ltd.	3.02%	15104030
10	ELD	Eldorado Gold Corporation	2.62%	15104030
11	YRI	Yamana Gold Inc.	2.42%	15104030
12	IVN	Ivanhoe Mines Ltd.	2.02%	15104020
13	IMG	Iamgold Corporation	2.00%	15104030

	Symbol	Company Name	Relative Weight	GICS Code
14	EQN	Equinox Minerals Limited J	1.92%	15104020
15	TRE	Sino-Forest Corporation	1.57%	15105010
16	LUN	Lundin Mining Corporation	1.28%	15104020
17	FNV	Franco-Nevada Corporation	1.16%	15104030
18	NGD	New Gold Inc. J	1.15%	15104030
19	OSK	Osisko Mining Corporation J	1.13%	15104030
20	PAA	Pan American Silver Corp.	1.00%	15104040
21	IMN	Inmet Mining Corporation	0.91%	15104020
22	CLM	Consolidated Thompson Iron Mines Limited J	0.89%	15104050
23	QUX	Quadra Fnx Mining Ltd.	0.80%	15104020
24	MX	Methanex Corporation	0.77%	15101010
25	CG	Centerra Gold Inc.	0.75%	15104030
26	DGC	Detour Gold Corporation J	0.72%	15104030
27	SSO	Silver Standard Resources Inc.	0.71%	15104040
28	HBM	Hudbay Minerals Inc.	0.70%	15104020
29	LIF.UN	Labrador Iron Ore Royalty Corp. Stapled Un	0.65%	15104050
30	S	Sherritt International Corporation	0.64%	15104020
31	SVM	Silvercorp Metals Inc. J	0.61%	15104040
32	SMF	Semafo Inc. J	0.59%	15104030
33	ASR	Alacer Gold Corp. J	0.59%	15104030
34	NG	Novagold Resources Inc. J	0.59%	15104030
35	FR	First Majestic Silver Corp. J	0.53%	15104040
36	TCM	Thompson Creek Metals Company Inc.	0.52%	15104020
37	AGI	Alamos Gold Inc. J	0.50%	15104030
38	EGU	European Goldfields Limited J	0.48%	15104030
39	GBU	Gabriel Resources Ltd. J	0.46%	15104030
40	WFT	West Fraser Timber Co. Ltd.	0.43%	15105010
41	GAM	Gammon Gold Inc. J	0.39%	15104030
42	HW	Harry Winston Diamond Corporation	0.37%	15104040
43	MFL	Minefinders Corporation Ltd. J	0.34%	15104030
44	NSU	Nevsun Resources Ltd. J	0.33%	15104030
45	NEM	Neo Material Technologies Inc.	0.32%	15101050
46	GBG	Great Basin Gold Ltd. J	0.31%	15104030
47	MDI	Major Drilling Group International Inc.	0.31%	15104020
48	ARZ	Aurizon Mines Ltd. J	0.28%	15104030
49	ELR	Eastern Platinum Limited J	0.28%	15104040
50	CFP	Canfor Corporation	0.27%	15105010
51	LSG	Lake Shore Gold Corp. J	0.27%	15104030
52	NDM	Northern Dynasty Minerals Ltd. J	0.27%	15104020
53	TKO	Taseko Mines Limited	0.25%	15104020
54	DPM	Dundee Precious Metals Inc.	0.24%	15104040

	Symbol	Company Name	Relative Weight	GICS Code
55	KGI	Kirkland Lake Gold Inc. J	0.23%	15104030
56	RMX	Rubicon Minerals Corporation J	0.23%	15104030
57	CSI	Colossus Minerals Inc. J	0.23%	15104030
58	NGX	Northgate Minerals Corporation	0.22%	15104030
59	PDL	North American Palladium Ltd.	0.22%	15104040
60	CCL.B	Ccl Industries Inc. Cl 'B' Nv	0.22%	15103010
61	GCE	Grande Cache Coal Corporation J	0.21%	15104020
62	GSC	Golden Star Resources Ltd.	0.21%	15104030
63	CS	Capstone Mining Corp. J	0.21%	15104020
64	GUY	Guyana Goldfields Inc. J	0.21%	15104030
65	CGG	China Gold International Resources Corp Ltd J	0.20%	15104030
66	OGC	Oceanagold Corporation	0.20%	15104030
67	ML	Mercator Minerals Ltd. J	0.19%	15104020
68	JAG	Jaguar Mining Inc. J	0.12%	15104030

#### Telecommunication Services

1	T	Telus Corporation	26.01%	50101020
2	RCI.B	Rogers Communications Inc. Cl 'B' Nv	25.68%	50102010
3	BCE	BCE Inc.	24.32%	50101020
4	BA	Bell Aliant Inc.	15.25%	50101020
5	MBT	Manitoba Telecom Services Inc.	8.74%	50101020

#### Utilities

1	FTS	Fortis Inc.	22.00%	55101010
2	TA	Transalta Corporation	18.06%	55105010
3	EMA	Emera Incorporated	14.00%	55101010
4	CU	Canadian Utilities Ltd. Cl 'A' Nv	12.45%	55103010
5	ACO.X	Atco Ltd. Cl 'I' Nv	8.89%	55103010
6	JE	Just Energy Group Inc.	7.92%	55103010
7	BRC.UN	Brookfield Renewable Power Fund Trust Units	5.33%	55105010
8	NPI	Northland Power Inc.	4.68%	55105010
9	ATP	Atlantic Power Corporation	3.76%	55105010
10	CPA.UN	Capital Power Income L.P. Units	2.92%	55105010

#### Global Gold

1	ABX	Barrick Gold Corporation	17.33%	15104030
2	G	Goldcorp Inc.	15.16%	15104030
3	NEM	Newmont Mining Corp	9.85%	15104030
4	AU	Anglogold Ashanti Ltd ADR	6.62%	15104030
5	K	Kinross Gold Corporation	6.11%	15104030
6	GFI	Gold Fields Ltd ADR	4.28%	15104030
7	AEM	Agnico-Eagle Mines Ltd.	4.00%	15104030

	Symbol	Company Name	Relative Weight	GICS Code
8	ELD	Eldorado Gold Corporation	3.47%	15104030
9	YRI	Yamana Gold Inc.	3.21%	15104030
10	GOLD	Randgold Resources Ltd Spon ADR	2.68%	15104030
11	IMG	Iamgold Corporation	2.65%	15104030
12	HMY	Harmony Gold Mining Co ADR	1.93%	15104030
13	FNV	Franco-Nevada Corporation	1.54%	15104030
14	NGD	New Gold Inc. J	1.52%	15104030
15	OSK	Osisko Mining Corporation J	1.50%	15104030
16	ANV	Allied Nevada Gold Corp. J	1.14%	15104030
17	RGLD	Royal Gold Inc	1.12%	15104030
18	CG	Centerra Gold Inc.	1.00%	15104030
19	DGC	Detour Gold Corporation J	0.96%	15104030
20	CEE	Centamin Egypt Limited Ordinary	0.80%	15104030
21	SMF	Semafo Inc. J	0.79%	15104030
22	ASR	Alacer Gold Corp. J	0.78%	15104030
23	NG	Novagold Resources Inc. J	0.78%	15104030
24	AGI	Alamos Gold Inc. J	0.66%	15104030
25	EGU	European Goldfields Limited J	0.64%	15104030
26	GBU	Gabriel Resources Ltd. J	0.61%	15104030
27	GAM	Gammon Gold Inc. J	0.52%	15104030
28	SA	Seabridge Gold Inc	0.48%	15104030
29	MFL	Minefinders Corporation Ltd. J	0.46%	15104030
30	NSU	Nevsun Resources Ltd. J	0.43%	15104030
31	GBG	Great Basin Gold Ltd. J	0.41%	15104030
32	ARZ	Aurizon Mines Ltd. J	0.38%	15104030
33	CGA	CGA Mining Limited Ordinary J	0.36%	15104030
34	IAU	Intrepid Mines Limited Ordinary J	0.36%	15104030
35	LSG	Lake Shore Gold Corp. J	0.35%	15104030
36	UXG	US Gold Corp	0.34%	15104030
37	KGI	Kirkland Lake Gold Inc. J	0.31%	15104030
38	RMX	Rubicon Minerals Corporation J	0.31%	15104030
39	CSI	Colossus Minerals Inc. J	0.30%	15104030
40	NGX	Northgate Minerals Corporation	0.30%	15104030
41	BTO	B2gold Corp. J	0.29%	15104030
42	GSC	Golden Star Resources Ltd.	0.28%	15104030
43	GUY	Guyana Goldfields Inc. J	0.27%	15104030
44	CGG	China Gold International Resources Corp Ltd J	0.27%	15104030
45	OGC	Oceanagold Corporation	0.26%	15104030
46	KGN	Keegan Resources Inc. J	0.24%	15104030
47	PG	Premier Gold Mines Limited J	0.24%	15104030
48	ITH	International Tower Hill Mines Ltd. J	0.23%	15104030

	Symbol	Company Name	Relative Weight	GICS Code
49	TXG	Torex Gold Resources Inc. J	0.23%	15104030
50	BAA	Banro Corporation J	0.21%	15104030
51	AR	Argonaut Gold Inc. J	0.17%	15104030
52	JAG	Jaguar Mining Inc. J	0.16%	15104030
53	XRA	Exeter Resource Corporation	0.15%	15104030
54	SUE	Sulliden Gold Corporation Ltd. J	0.15%	15104030
55	ORE	Orezone Gold Corporation	0.13%	15104030
56	CRJ	Claude Resources Inc.	0.11%	15104030
57	GSL	Greystar Resources Ltd. J	0.10%	15104030
58	CRK	Crocodile Gold Corp. J	0.07%	15104030

#### Real Estate

1	BAM.A	Brookfield Asset Management Inc. Cl 'A' Lv	24.50%	40403010
2	REI.UN	Riocan Real Estate Investment Trust Units	15.65%	40402060
3	BPO	Brookfield Properties Corporation	10.29%	40403020
4	HR.UN	H&R Real Estate Investment Trust Stapled Unit	7.45%	40402010
5	REF.UN	Canadian Real Estate Investment Trust Units	5.20%	40402010
6	CWT.UN	Calloway Real Estate Investment Trust Units	4.91%	40402060
7	BEI.UN	Boardwalk Real Estate Investment Trust Units	4.35%	40402050
8	D.UN	Dundee Real Estate Investment Trust Units	3.90%	40402040
9	CAR.UN	Cdn Apartment Prop Real Est Inv Tr Units	3.40%	40402050
10	PMZ.UN	Primaris Retail Real Estate Investment Tr Un	3.33%	40402060
11	CSH.UN	Chartwell Seniors Housing Reit Trust Units	2.95%	40402070
12	CUF.UN	Cominar Real Estate Investment Trust Units	2.82%	40402010
13	AX.UN	Artis Real Estate Investment Trust Units	2.41%	40402010
14	AP.UN	Allied Properties Real Estate Invest Trust Un	2.27%	40402040
15	EXE.UN	Extendicare Real Estate Investment Trust Unit	2.21%	40402070
16	FCR	First Capital Realty Inc.	2.19%	40403010
17	FSV	Firstservice Corporation Sv	2.16%	40403040

#### Diversified Metals & Mining

1	TCK.B	Teck Resources Limited Cl 'B' Sv	24.18%	15104020
2	FM	First Quantum Minerals Ltd. J	17.84%	15104020
3	IVN	Ivanhoe Mines Ltd.	11.45%	15104020
4	EQN	Equinox Minerals Limited J	10.90%	15104020
5	LUN	Lundin Mining Corporation	7.27%	15104020
6	IMN	Inmet Mining Corporation	5.14%	15104020
7	QUX	Quadra Fnx Mining Ltd.	4.54%	15104020
8	HBM	Hudbay Minerals Inc.	3.94%	15104020
9	S	Sherritt International Corporation	3.63%	15104020
10	TCM	Thompson Creek Metals Company Inc.	2.96%	15104020
11	MDI	Major Drilling Group International Inc.	1.73%	15104020

	Symbol	Company Name	Relative Weight	GICS Code
12	NDM	Northern Dynasty Minerals Ltd. J	1.51%	15104020
13	TKO	Taseko Mines Limited	1.44%	15104020
14	GCE	Grande Cache Coal Corporation J	1.22%	15104020
15	CS	Capstone Mining Corp. J	1.18%	15104020
16	ML	Mercator Minerals Ltd. J	1.07%	15104020

### Global Mining

1	BHP	BHP Billiton Ltd ADR	17.00%	15104020
2	RIO	Rio Tinto Plc ADR	11.18%	15104020
3	BBL	BHP Billiton Plc ADR	9.18%	15104020
4	FCX	Freeport McMoran Copper & Gold	5.21%	15104020
5	ABX	Barrick Gold Corporation	5.09%	15104030
6	G	Goldcorp Inc.	4.45%	15104030
7	NEM	Newmont Mining Corp	2.89%	15104030
8	TCK.B	Teck Resources Limited Cl 'B' Sv	2.63%	15104020
9	AU	Anglogold Ashanti Ltd ADR	1.94%	15104030
10	BTU	Peabody Energy Corp	1.81%	10102050
11	AA	Alcoa Inc	1.81%	15104010
12	K	Kinross Gold Corporation	1.79%	15104030
13	SLW	Silver Wheaton Corp.	1.43%	15104040
14	GFI	Gold Fields Ltd ADR	1.26%	15104030
15	FM	First Quantum Minerals Ltd. J	1.23%	15104020
16	CNX	Consol Energy Inc	1.22%	10102050
17	AEM	Agnico-Eagle Mines Ltd.	1.17%	15104030
18	CCO	Cameco Corporation	1.16%	10102050
19	ELD	Eldorado Gold Corporation	1.02%	15104030
20	YRI	Yamana Gold Inc.	0.94%	15104030
21	BVN	Compania De Minas Buenaventura S.A.A.	0.90%	15104030
22	GOLD	Randgold Resources Ltd Spon ADR	0.79%	15104030
23	IVN	Ivanhoe Mines Ltd.	0.79%	15104020
24	IMG	Iamgold Corporation	0.78%	15104030
25	YZC	Yanzhou Coal Mining Co H ADR	0.77%	10102050
26	EQN	Equinox Minerals Limited J	0.75%	15104020
27	WLT	Walter Energy Inc.	0.73%	15104020
28	MEE	Massey Energy Co	0.71%	10102050
29	ANR	Alpha Natural Resources	0.70%	10102050
30	SCCO	Southern Copper Corp	0.64%	15104020
31	AWC	Alumina Ltd ADR	0.62%	15104010
32	HMY	Harmony Gold Mining Co ADR	0.57%	15104030
33	ACI	Arch Coal	0.56%	10102050
34	LUN	Lundin Mining Corporation	0.50%	15104020

	Symbol	Company Name	Relative Weight	GICS Code
35	FNV	Franco-Nevada Corporation	0.45%	15104030
36	NGD	New Gold Inc. J	0.45%	15104030
37	OSK	Osisko Mining Corporation J	0.44%	15104030
38	PAA	Pan American Silver Corp.	0.39%	15104040
39	ACH	Aluminum Corporation of China Ltd A ADR	0.37%	15104010
40	IMN	Inmet Mining Corporation	0.35%	15104020
41	ANV	Allied Nevada Gold Corp. J	0.33%	15104030
42	SLT	Sterlite Industries Indi-Adr	0.33%	15104020
43	RGLD	Royal Gold Inc	0.33%	15104030
44	CMP	Compass Minerals Intl	0.32%	15104020
45	QUX	Quadra Fnx Mining Ltd.	0.31%	15104020
46	CG	Centerra Gold Inc.	0.29%	15104030
47	CDE	Coeur D'alene Mines Corp	0.28%	15104040
48	DGC	Detour Gold Corporation J	0.28%	15104030
49	PDN	Paladin Energy Ltd. Ordinary J	0.28%	10102050
50	SSO	Silver Standard Resources Inc.	0.28%	15104040
51	HBM	Hudbay Minerals Inc.	0.27%	15104020
52	HL	Hecla Mining Co	0.26%	15104040
53	S	Sherritt International Corporation	0.25%	15104020
54	SVM	Silvercorp Metals Inc. J	0.24%	15104040
55	CEE	Centamin Egypt Limited Ordinary	0.23%	15104030
56	SMF	Semafo Inc. J	0.23%	15104030
57	PCX	Patriot Coal Corp	0.23%	10102050
58	ASR	Alacer Gold Corp. J	0.23%	15104030
59	NG	Novagold Resources Inc. J	0.23%	15104030
60	FR	First Majestic Silver Corp. J	0.21%	15104040
61	TCM	Thompson Creek Metals Company Inc.	0.20%	15104020
62	PVR	Penn Virginia Resource Partners Lp	0.20%	10102050
63	AGI	Alamos Gold Inc. J	0.20%	15104030
64	ICO	International Coal Group Inc	0.19%	10102050
65	UUU	Uranium One Inc. J	0.19%	10102050
66	EGU	European Goldfields Limited J	0.19%	15104030
67	NRP	Natural Resource Partners Lp	0.18%	10102050
68	TIE	Titanium Metals Corp	0.18%	15104020
69	GBU	Gabriel Resources Ltd. J	0.18%	15104030
70	ARLP	Alliance Resource Partners	0.17%	10102050
71	GAM	Gammon Gold Inc. J	0.15%	15104030
72	HW	Harry Winston Diamond Corporation	0.14%	15104040
73	SA	Seabridge Gold Inc	0.14%	15104030
74	GSM	Globe Specialty Metals Inc	0.14%	15104020
75	MFL	Minefinders Corporation Ltd. J	0.13%	15104030

Symbol	Company Name	Relative Weight	GICS Code
76 SWC	Stillwater Mining Co	0.13%	15104040
77 NSU	Nevsun Resources Ltd. J	0.13%	15104030
78 CLD	Cloud Peak Energy Inc	0.13%	10102050
79 GBG	Great Basin Gold Ltd. J	0.12%	15104030
80 MDI	Major Drilling Group International Inc.	0.12%	15104020
81 CENX	Century Aluminum Co	0.11%	15104010
82 MNB	Mirabela Nickel Limited Ordinary J	0.11%	15104020
83 ARZ	Aurizon Mines Ltd. J	0.11%	15104030
84 ELR	Eastern Platinum Limited J	0.11%	15104040
85 CGA	Cga Mining Limited Ordinary J	0.11%	15104030
86 IAU	Intrepid Mines Limited Ordinary J	0.11%	15104030
87 LSG	Lake Shore Gold Corp. J	0.10%	15104030
88 NDM	Northern Dynasty Minerals Ltd. J	0.10%	15104020
89 TKO	Taseko Mines Limited	0.10%	15104020
90 UXG	Us Gold Corp	0.10%	15104030
91 RTI	RTI International Metals Inc	0.10%	15104020
92 ACO	Amcol Intl Corp	0.09%	15104020
93 EDR	Endeavour Silver Corp. J	0.09%	15104040
94 DPM	Dundee Precious Metals Inc.	0.09%	15104040
95 KGI	Kirkland Lake Gold Inc. J	0.09%	15104030
96 RMX	Rubicon Minerals Corporation J	0.09%	15104030
97 GORO	Gold Resource Corp	0.09%	15104040
98 CSI	Colossus Minerals Inc. J	0.09%	15104030
99 NGX	Northgate Minerals Corporation	0.09%	15104030
100 BTO	B2gold Corp. J	0.09%	15104030
101 SBB	Sabina Gold & Silver Corp. J	0.09%	15104020
102 MTRN	Materion Corporation	0.09%	15104020
103 AVL	Avalon Rare Metals Inc. J	0.08%	15104020
104 PDL	North American Palladium Ltd.	0.08%	15104040
105 GCE	Grande Cache Coal Corporation J	0.08%	15104020
106 GSC	Golden Star Resources Ltd.	0.08%	15104030
107 CS	Capstone Mining Corp. J	0.08%	15104020
108 GUY	Guyana Goldfields Inc. J	0.08%	15104030
109 CGG	China Gold International Resources Corp Ltd J	0.08%	15104030
110 OGC	Oceanagold Corporation	0.08%	15104030
111 KALU	Kaiser Aluminum	0.07%	15104010
112 ML	Mercator Minerals Ltd. J	0.07%	15104020
113 DML	Denison Mines Corp.	0.07%	10102050
114 KGN	Keegan Resources Inc. J	0.07%	15104030
115 PG	Premier Gold Mines Limited J	0.07%	15104030
116 ZINC	Horsehead Holding Corp	0.07%	15104020
117 ITH	International Tower Hill Mines Ltd. J	0.07%	15104030
118 FVI	Fortuna Silver Mines Inc.	0.07%	15104040

Symbol	Company Name	Relative Weight	GICS Code
119 TXG	Torex Gold Resources Inc. J	0.07%	15104030
120 AVM	Anvil Mining Limited	0.07%	15104020
121 JRCC	James River Coal	0.06%	10102050
122 BAA	Banro Corporation J	0.06%	15104030
123 CUM	Copper Mountain Mining Corporation J	0.06%	15104020
124 MAI	Minera Andes Inc. J	0.06%	15104040
125 USU	USEC Inc	0.06%	10102050
126 SCP	Sprott Resource Corp.	0.05%	15104020
127 MAG	Mag Silver Corp. J	0.05%	15104040
128 III	Imperial Metals Corp.	0.05%	15104020
129 AR	Argonaut Gold Inc. J	0.05%	15104030
130 ORA	Aura Minerals Inc. J	0.05%	15104020
131 CMK	Cline Mining Corporation J	0.05%	15104020
132 AZC	Augusta Resource Corporation J	0.05%	15104020
133 JAG	Jaguar Mining Inc. J	0.05%	15104030
134 XRA	Exeter Resource Corporation	0.05%	15104030
135 BAJ	Baja Mining Corp. J	0.05%	15104020
136 SUE	Sulliden Gold Corporation Ltd. J	0.04%	15104030
137 GPR	Great Panther Silver Limited J	0.04%	15104040
138 ORE	Orezone Gold Corporation	0.04%	15104030
139 PTM	Platinum Group Metals Ltd. J	0.04%	15104040
140 BWR	Breakwater Resources Ltd.	0.04%	15104020
141 WRN	Western Copper Corporation J	0.04%	15104020
142 CRJ	Claude Resources Inc.	0.03%	15104030
143 GSL	Greystar Resources Ltd. J	0.03%	15104030
144 AUM	Golden Minerals Company J	0.03%	15104040
145 ECU	ECU Silver Mining Inc. J	0.03%	15104040
146 UEC	Uranium Energy Corp	0.02%	10102050
147 CRK	Crocodile Gold Corp. J	0.02%	15104030
148 UEX	UEX Corporation J	0.02%	10102050

#### Global Base Metals

1 RIO	Rio Tinto Plc ADR	10.31%	15104020
2 FCX	Freeport McMoran Copper & Gold	10.31%	15104020
3 BHP	BHP Billiton Ltd ADR	10.26%	15104020
4 BBL	BHP Billiton Plc ADR	10.20%	15104020
5 TCK.B	Teck Resources Limited Cl 'B' Sv	9.52%	15104020
6 AA	Alcoa Inc	7.66%	15104010
7 FM	First Quantum Minerals Ltd. J	5.19%	15104020
8 IVN	Ivanhoe Mines Ltd.	3.33%	15104020
9 EQN	Equinox Minerals Limited J	3.18%	15104020
10 WLT	Walter Energy Inc.	3.10%	15104020
11 SCCO	Southern Copper Corp	2.70%	15104020

	Symbol	Company Name	Relative Weight	GICS Code
12	AWC	Alumina Ltd ADR	2.65%	15104010
13	LUN	Lundin Mining Corporation	2.12%	15104020
14	ACH	Aluminum Corporation of China Ltd A ADR	1.58%	15104010
15	IMN	Inmet Mining Corporation	1.50%	15104020
16	SLT	Sterlite Industries Indi-Adr	1.40%	15104020
17	CMP	Compass Minerals Intl	1.36%	15104020
18	QUX	Quadra Fnx Mining Ltd.	1.32%	15104020
19	HBM	Hudbay Minerals Inc.	1.15%	15104020
20	S	Sherritt International Corporation	1.06%	15104020
21	TCM	Thompson Creek Metals Company Inc.	0.86%	15104020
22	TIE	Titanium Metals Corp	0.77%	15104020
23	GSM	Globe Specialty Metals Inc	0.58%	15104020
24	MDI	Major Drilling Group International Inc.	0.50%	15104020
25	CENX	Century Aluminum Co	0.48%	15104010
26	MNB	Mirabela Nickel Limited Ordinary J	0.47%	15104020
27	NDM	Northern Dynasty Minerals Ltd. J	0.44%	15104020
28	TKO	Taseko Mines Limited	0.42%	15104020
29	RTI	Rti International Metals Inc	0.41%	15104020
30	ACO	Amcol Intl Corp	0.40%	15104020
31	SBB	Sabina Gold & Silver Corp. J	0.36%	15104020
32	MTRN	Materion Corporation	0.36%	15104020
33	AVL	Avalon Rare Metals Inc. J	0.36%	15104020
34	GCE	Grande Cache Coal Corporation J	0.35%	15104020
35	CS	Capstone Mining Corp. J	0.34%	15104020
36	KALU	Kaiser Aluminum	0.31%	15104010
37	ML	Mercator Minerals Ltd. J	0.31%	15104020
38	ZINC	Horsehead Holding Corp	0.29%	15104020
39	AVM	Anvil Mining Limited	0.28%	15104020
40	CUM	Copper Mountain Mining Corporation J	0.26%	15104020
41	SCP	Sprott Resource Corp.	0.22%	15104020
42	III	Imperial Metals Corp.	0.21%	15104020
43	ORA	Aura Minerals Inc. J	0.21%	15104020
44	CMK	Cline Mining Corporation J	0.20%	15104020
45	AZC	Augusta Resource Corporation J	0.20%	15104020
46	BAJ	Baja Mining Corp. J	0.19%	15104020
47	BWR	Breakwater Resources Ltd.	0.15%	15104020
48	WRN	Western Copper Corporation J	0.15%	15104020

Symbol	Company Name	Relative Weight	GICS Code
--------	--------------	-----------------	-----------

# Monthly Summary APRIL 2011

## S&P/TSX MAJOR INDICES

S&P/TSX Index Names	Latest 12 Month Earnings \$	P/E Ratio	Earnings Adjust. to Index \$	Indicated Dividends Per Year \$	Yield %	Dividends Adjust. to Index \$				Net Change	% Change	Total Value	Total Volume	Total return Index	
						Open	High	Low	Close						
<b>Composite Index</b>	80251239402	20.16	691.65	38272908019	2.37	329.86	14118.21	14314.45	13584.55	13944.79	-171.31	-1.21	93675250895	4024443300	38129.27
<b>60 Index</b>	66450729161	17.95	44.45	28191518925	2.36	18.86	809.38	820.07	776.27	797.90	-11.26	-1.39	62681688397	1686329069	1761.35
<b>MegaCap Index</b>	49575346602	17.89	9.09	20334720696	2.29	3.73	165.97	167.84	159.00	162.65	-3.19	-1.92	43263560134	934004559	186.90
<b>Completion Index</b>	13800510241	30.80	31.14	10081389094	2.37	22.75	965.88	982.29	937.19	959.19	-6.88	-0.71	30993562498	2338114231	1262.17
<b>SmallCap Index</b>	3657693585	42.26	18.36	3351935452	2.17	16.83	781.75	803.43	763.82	775.99	-5.80	-0.74	11282256739	1514996187	1012.97
<b>Income Trust Index</b>	1344913915	26.93	6.01	1963779286	5.42	8.78	166.05	166.95	159.50	161.92	-5.11	-3.06	1185003950	56116952	361.05
<b>Equity Income Index</b>	22901553591	20.71	5.09	23648813880	4.99	5.26	106.95	107.48	103.24	105.52	-1.40	-1.31	19226293482	630128315	107.60
<b>Composite Dividend Index</b>	74065033731	19.41	5.45	38232737870	2.66	2.81	107.00	108.22	102.77	105.79	-1.19	-1.11	72828956462	2222834595	106.88
<b>Equity Index</b>	78906325488	20.05	720.26	36309128733	2.30	331.43	14613.73	14829.86	14061.24	14438.48	-171.03	-1.17	92490246945	3968326348	38196.29
<b>Equity 60 Index</b>	66450729161	17.95	44.78	28191518925	2.36	19.00				803.88	-11.35	-1.39	62681688397	1686329069	1756.33
<b>Equity Completion Index</b>	12455596327	31.22	32.84	8117609808	2.09	21.40				1025.13	-5.05	-0.49	29808558548	2281997279	1229.12
<b>Equity SmallCap Index</b>	2907775668	46.92	18.42	2296415058	1.68	14.55				864.41	-4.72	-0.54	10488992989	1458777961	964.56
<b>60 VIX</b>							14.07	16.45	12.62	15.89	1.17	7.95			
<b>S&amp;P/TSX Capped Indices</b>															
Capped Composite Index	80251239402	20.16	801.33	38272908019	2.37	382.16	16356.98	16584.50	15738.66	16156.06	-198.48	-1.21	93675250895	4024443300	44280.81
60 Capped Index	66450729161	17.95	49.15	28191518925	2.36	20.85	895.02	906.79	858.40	882.31	-12.46	-1.39	62681688397	1686329069	1957.16
Capped Equity Index	78906325488	20.05	834.48	36309128733	2.30	383.99	16931.08	17182.50	16291.22	16728.04	-198.15	-1.17	92490246945	3968326348	44358.62
Cdn Dividend Aristocrats Index	612208719	16.65	12.80	355773826	3.49	7.44	215.25	216.70	211.41	213.16	-2.12	-0.98	13956025494	360858246	319.42
60 130/30 Strategy Index	65184155022	18.46	6.60	27043528512	2.25	2.74	122.71	125.28	118.61	121.90	-0.82	-0.67	62681688397	1686329069	126.49
Preferred Share Index	0	0	0.00	2038585461	5.17	44.18	859.20	860.10	850.93	855.22	-4.72	-0.55	751852357	30159457	1378.04
Capped Cons. Disc. Index	4312724584	15.58	6.26	1895876926	2.82	2.75	97.24	97.97	94.75	97.53	0.35	0.36	3687096126	168877785	121.34
Capped Cons. Staples Index	2498420138	15.90	12.74	710228770	1.79	3.62	200.52	204.83	198.30	202.48	1.86	0.93	1701696658	63409359	235.40
Capped Divers.															
Metals & Mining Index	2411756549	30.94	48.01	403342909	0.54	8.03	1433.14	1580.61	1379.85	1485.47	55.68	3.89	10873120205	789038713	1694.92
Capped Energy Index	12570795311	28.69	12.11	7573299389	2.10	7.30	358.34	360.68	330.85	347.57	-9.39	-2.63	20717056748	790636699	430.22
Capped Financial Index	26155142237	15.84	12.39	14816556600	3.58	7.02	199.44	201.65	192.61	196.14	-3.41	-1.71	16321327544	338871664	275.73
Capped Health Care Index	-51960937		-0.18	426344845	2.42	1.45	59.96	61.52	58.98	59.88	0.03	0.05	522386167	13224242	72.83
Capped Industrials Index	4745435984	19.48	6.11	1796502478	1.94	2.31	118.60	119.76	113.48	119.11	0.34	0.29	3748363509	214556959	141.73
Capped Inform. Tech. Index	2463242543	16.21	2.05	113811583	0.29	0.09	34.31	34.97	33.18	33.25	-1.00	-2.92	3215173264	81177816	33.68
Capped Materials Index	15033150200	24.55	17.83	2122393298	0.58	2.52	438.37	461.63	426.97	437.66	-1.91	-0.43	35732218057	2000484641	490.00
Capped Real Estate Index	1915667420	25.83	8.19	2038563692	4.12	8.71	210.71	212.33	205.24	211.46	0.69	0.33	1618000458	71316238	327.90
Capped Telecom. Serv. Index	2692483648	23.98	3.89	3250519496	5.03	4.70	92.62	93.39	91.45	93.38	0.74	0.80	2319577208	63503659	141.23
Capped Utilities Index	1235156079	20.90	10.58	1221039178	4.73	10.46	222.46	222.85	214.23	221.06	-1.35	-0.61	812586991	32634359	353.17
Capped REIT Index	971113836	26.94	5.51	1436282387	5.49	8.14	149.97	150.35	145.49	148.32	-2.03	-1.35	847690161	41785080	277.00
<b>S&amp;P/TSX Global Indices (previous day)</b>															
Global Gold Index			2259143362		0.81	3.29	394.80	416.45	391.59	405.85	8.16	2.05			437.43
Global Gold Index (USD)			2259143362		0.77	3.82				495.67	21.89	4.62			534.24
Global Mining Index			12134078634		1.28	1.60	123.22	129.16	120.61	124.75	0.84	0.68			132.56
Global Mining Index (USD)			12134078634		1.21	1.70				139.61	4.35	3.22			154.63
Global Base Metals Index			19387008310		3.65	6.58	178.47	188.00	170.97	180.29	1.25	0.70			185.20
Global Base Metals Index (USD)			19387008310		3.46	7.54				217.65	6.82	3.23			223.58
Equal Weight Global Base Metals Index			6022185681		1.04	3.56	339.56	359.14	326.40	341.82	2.73	0.81			373.60
Equal Weight Global Base Metals Cdn Hedged Index			6022185681							361.00	6.34	1.79			394.54
North Amer. Pref. Stock Index (Price Ret.) (Cdn)			5174299048		2.59	18.36	711.65	713.64	703.07	707.50	-7.28	-1.02			1145.29
North Amer. Pref. Stock Index (Price Ret.) (Cdn Hdg.)			5174299048							826.38	1.81	0.22			1331.46
North Amer. Pref. Stock Index (Net Total Ret.) (Cdn Hdg.)			5174299048							1277.90	8.18	0.64			
North Amer. Pref. Stock Index (Net Total Ret.) (Cdn)			5174299048							1098.70	-6.56	-0.59			
North Amer. Pref. Stock Index (Price Ret.) (USD)			5174299048		2.46	24.76	995.39	1008.09	983.40	1005.50	14.61	1.47			1627.68
North Amer. Pref. Stock Index (Net Total Ret.) (USD)			5174299048							1561.46	29.26	1.91			

S&P/TSX Index Names	Latest 12 Month Earnings \$	P/E Ratio	Earnings Adjust. to Index \$	Indicated Dividends Per Year \$	Yield %	Dividends Adjust. to Index \$	Open	High	Low	Close	Net Change	% Change	Total Value	Total Volume	Total return Index
<b>S&amp;P/TSX Equal Weight Indices</b>															
Diver. Banks Index	21514631128	13.70	15.47	10904497817	3.70	7.84	216.05	219.66	208.66	211.94	-4.41	-2.04	12199723913	178335911	300.89
60 Equal Weight Index	66114215241	18.17	6.75	29721521445	2.47	3.03	123.24	125.11	118.68	122.66	-0.56	-0.45	62681688397	1686329069	125.64
Oil & Gas Index	13218666114	23.91	15.60	8910197025	2.82	10.52	381.10	384.29	355.53	373.07	-6.49	-1.71	15527900492	430009979	467.26
<b>S&amp;P/TSX Composite - Sectors/Industries</b>															
60 Shariah Index	27357064544	20.98	6.70	7781618540	1.36	1.91	144.01	146.59	136.41	140.68	-3.19	-2.22	36326364045	896353312	144.89
Clean Technology Index	-135158024		-1.50	339257186	3.30	3.75	117.22	119.97	112.69	113.85	-3.05	-2.61	498692849	85326100	118.21
Energy*	15874151611	27.83	119.49	10571787324	2.39	79.58				3325.95	-67.85	-2.00	23996824914	976386578	4138.30
Energy**	15874151611	27.83	119.49	10571787324	2.39	79.58				3325.95	-67.85	-2.00	23996824914	976386578	4138.30
Energy Equip. & Services***	535754377	33.78	52.60	209120799	1.16	20.53				1776.93	57.44	3.34	1492452393	96381351	2132.66
Oil & Gas Drilling****	97458738	85.90	16.42	71908436	0.86	12.11				1410.07	100.90	7.71	915412421	70018144	1770.13
Oil & Gas Equip. & Services****	438295639	22.20	101.14	137212363	1.41	31.66				2244.77	-3.21	-0.14	577039972	26363207	2619.80
Oil Gas & Consumable Fuels****	15338397234	27.63	125.56	10362666525	2.45	84.83				3468.85	-78.58	-2.22	22504372521	88005227	4324.82
Integrated Oil & Gas****	5275384510	22.48	177.87	1766363367	1.49	59.56				3999.15	-37.77	-0.94	5839421183	149992102	4566.21
Oil & Gas Exploration & Production****	6759656425	33.14	108.09	5597815223	2.50	89.51				3581.71	-147.29	-3.95	13385183172	544263246	4555.24
Oil & Gas Refining & Marketing****	128888320	21.33	83.02	134492160	4.89	86.63				1770.42	-3.61	-0.20	108484963	2803091	2752.62
Oil & Gas Storage & Transportation****	2857602520	22.49	70.35	2706221775	4.21	66.63				1582.59	32.51	2.10	2034742218	53293445	2058.26
Coal & Consumable Fuels****	316865459	44.56	20.06	157774000	1.12	9.99				893.74	-36.85	-3.96	1136540984	129653343	925.56
Materials*	15033150200	24.55	163.71	2122393298	0.58	23.11				4018.87	-17.50	-0.43	35732218057	2000484641	4474.47
Materials**	15033150200	24.55	163.71	2122393298	0.58	23.11				4018.87	-17.50	-0.43	35732218057	2000484641	4474.47
Chemicals***	2984610440	21.18	260.23	303245413	0.48	26.44				5512.34	-322.06	-5.52	3377389607	67599424	6061.71
Commodity Chemicals****	104719360	27.07	45.31	59793828	2.11	25.87				1226.63	18.05	1.49	148635179	4755425	1513.28
Fertilizers & Agricultural Chemicals****	2822266600	20.98	329.41	243451585	0.41	28.42				6910.90	-442.43	-6.02	3087781009	48891159	7488.95
Specialty Chemicals****	57624480	20.40	6.31	0	0.00	0.00				128.65	6.05	4.93	140973420	13952840	128.65
Containers & Packaging***	54713859	14.59	104.16	17649632	2.21	33.60				1519.26	2.40	0.16	13722302	427164	1772.04
Metal & Glass Containers****	54713859	14.59	134.66	17649632	2.21	43.44				1963.99	3.10	0.16	13722302	427164	2280.83
Metals & Mining***	11431084379	25.95	174.31	1785124178	0.60	27.22				4524.19	43.97	0.98	31714136533	1906183266	5031.19
Diver. Metals & Mining****	2534828050	29.31	393.17	458999719	0.62	71.19				11525.55	380.44	3.41	10873120205	789038713	13062.42
Gold****	7736506781	24.37	141.35	1197199330	0.64	21.87				3444.51	40.99	1.20	16114306444	830098913	3702.62
Precious Metals & Minerals****	938013884	30.05	95.24	64925130	0.23	6.59				2862.11	-168.47	-5.56	4060331290	251814631	2958.76
Steel****	221735664	25.55	451.79	64000000	1.13	130.40				11541.81	-365.77	-3.07	666378594	35231009	15687.33
Paper & Forest Products***	562741522	14.83	50.65	16374075	0.20	1.47				751.18	-73.87	-8.95	626969614	26274787	867.70
Forest Products****	562741522	14.83	177.23	16374075	0.20	5.16				2628.45	-258.47	-8.95	626969614	26274787	3120.43
Industrials*	4951701163	18.59	75.69	1762468676	1.92	26.94				1406.69	4.04	0.29	3748363509	214556959	1663.03
Capital Goods**	1230911346	27.22	25.90	647227194	1.93	13.62				704.96	1.80	0.26	1561805478	135389603	830.29
Aerospace & Defense***	784799231	17.24	21.30	188842858	1.40	5.13				367.30	-4.07	-1.10	823388350	108649997	422.43
Aerospace & Defense****	784799231	17.24	21.30	188842858	1.40	5.13				367.30	-4.07	-1.10	823388350	108649997	422.43
Constr. & Engineering***	464979760	19.74	331.71	138265160	1.51	98.64				6547.79	193.14	3.04	286026890	8019882	7281.48
Constr. & Engineering****	464979760	19.74	331.71	138265160	1.51	98.64				6547.79	193.14	3.04	286026890	8019882	7281.48
Machinery**	37462475	87.65	14.85	41974496	1.28	16.64				1301.48	89.28	7.37	173854815	6119084	1467.24
Constr. Farm Mach. & Heavy Trucks****	37462475	87.65	47.50	41974496	1.28	53.22				4163.76	285.65	7.37	173854815	6119084	4984.04
Trading Companies & Distributors***	-56330120		-22.70	278144680	3.70	112.09				3026.43	-104.95	-3.35	278535423	12600640	4226.11
Trading Companies & Distributors****	-56330120		-22.70	278144680	3.70	112.09				3026.43	-104.95	-3.35	278535423	12600640	4226.11
Commercial & Prof. Services**	397686582	21.17	33.24	132962495	1.58	11.11				703.51	14.81	2.15	265723473	10985447	885.42
Commercial Services & Supplies***	303829382	23.21	22.71	132962495	1.89	9.94				527.07	10.50	2.03	180364544	8093137	678.67
Commercial Printing****	140186626	7.08	84.24	29942774	3.02	17.99				596.24	-16.36	-2.67	33670701	2273481	716.75
Environmental & Facilities Services***	96154850	30.39	21.09	60857500	2.08	13.35				641.04	-16.82	-2.56	102528249	4204945	933.20
Diver. Support Services****	67487906	46.50	23.32	42162220	1.34	14.57				1084.48	84.46	8.45	44165593	1614711	1130.26
Prof. Services***	93857200	14.55	6.68	0	0.00	0.00				97.13	2.60	2.75	85358929	2892310	97.13
Research & Consulting Services****	93857200	14.55	6.68	0	0.00	0.00				97.13	2.60	2.75	85358929	2892310	97.13
Transportation**	3323103235	15.08	228.54	982278988	1.96	67.56				3446.39	0.12	0.00	1920834558	68181909	4071.14
Airlines***	339509383	9.29	44.00	103002000	3.26	13.35				408.94	-8.59	-2.06	163210885	36140648	462.32
Airlines****	339509383	9.29	44.00	103002000	3.26	13.35				408.94	-8.59	-2.06	163210885	36140648	462.32
Road & Rail***	2910799152	15.60	272.45	810058168	1.78	75.82				4250.24	16.05	0.38	1709197435	30063080	5004.65
Railroads****	2830049560	15.68	275.78	780694680	1.76	76.08				4324.13	17.85	0.41	1634605930	24412262	5041.50
Trucking***	80749592	12.81	67.59	29363488	2.84	24.58				865.73	-9.83	-1.12	74591505	5650818	1386.92
Transportation Infrastructure****	72794700	21.25	97.96	69218820	4.47	93.15				2082.08	-139.20	-6.27	48426238	1978181	3635.04
Marine Ports & Services****	72794700	21.25	105.81	69218820	4.47	100.61				2248.90	-150.36	-6.27	48426238	1978181	3926.29
Consumer Discretionary*	4312724584	15.58	68.77	1895876926	2.82	30.23				1071.81	3.77	0.35	3687096126	16887785	1330.82
Automobiles & Components**	985165607	11.43	119.94	215486161	1.91	26.23				1370.94	56.40	4.29	664356951	15236830	1638.40
Auto Components***	985165607	11.43	119.94	215486161	1.91	26.23				1370.94	56.40	4.29	664356951	15236830	1638.40
Auto Parts & Equip.****	985165607	11.43	119.94	215486161	1.91	26.23				1370.94	56.40	4.29	664356951	15236830	1638.40
Consumer Durables & Apparel**	300719954	15.29	154.52	24018552	0.52	12.34				2363.09	188.58	8.67	369286158	11178120	2411.26

S&P/TSX Index Names	Latest 12 Month Earnings \$	P/E Ratio	Earnings Adjust. to Index \$	Indicated Dividends Per Year \$	Yield %	Dividends Adjust. to Index \$	Open	High	Low	Close	Net Change	% Change	Total Value	Total Volume	Total return Index
Household Durables***	116799390	7.85	148.07	16582309	1.81	21.02				1161.70	12.19	1.06	21696883	689793	1250.23
Home Furnishings****	116799390	7.85	206.70	16582309	1.81	29.35				1621.65	17.01	1.06	21696883	689793	1745.23
Textiles Apparel & Luxury Goods***	183920563	20.02	235.65	7436243	0.20	9.53				4718.33	457.91	10.75	347589275	10488327	4729.79
Apparel Access. & Luxury Goods****	183920563	20.02	235.65	7436243	0.20	9.53				4718.33	457.91	10.75	347589275	10488327	4729.79
Consumer Services**	671256470	12.21	106.04	114585440	1.40	18.10				1295.33	50.71	4.07	464171226	13211684	1443.42
Hotels Restaurants & Leisure***	671256470	12.21	110.12	114585440	1.40	18.80				1345.15	52.65	4.07	464171226	13211684	1446.87
Hotels Resorts & Cruise Lines****	66312750	6.68	191.04	0	0.00	0.00				1276.12	-75.32	-5.57	47320897	3990872	1302.42
Restaurants****	604943720	12.82	121.78	114585440	1.48	23.07				1561.40	69.88	4.69	416850329	9220812	1646.18
Media**	1597090190	21.15	36.74	1386725344	4.11	31.90				777.05	-13.21	-1.67	1747746699	116863270	1041.11
Media***	1597090190	21.15	36.74	1386725344	4.11	31.90				777.05	-13.21	-1.67	1747746699	116863270	1041.11
Advertising****	-31758720		-12.41	93408000	3.86	36.50				946.72	-11.67	-1.22	150102155	11460996	1163.87
Broadcasting****	266821830	12.68	126.69	92682840	2.74	44.01				1606.47	-73.75	-4.39	142696850	5257837	1834.40
Cable & Satellite****	608133979	15.95	5.47	350933453	3.62	3.15				87.19	-1.84	-2.07	542441629	24523674	96.58
Movies & Entertainment****	63970410	22.21	43.39	72615060	5.11	49.25				963.54	58.24	6.43	60513776	2506485	1561.53
Publishing****	689922690	24.42	19.54	777025991	4.61	22.01				477.15	-7.66	-1.58	851992290	73114278	710.45
Retailing**	758492364	12.36	161.99	155061429	1.65	33.12				2002.57	-72.71	-3.50	441535091	12387881	2308.46
Multiline Retail***	513428196	11.96	192.88	86899681	1.42	32.65				2306.02	-121.41	-5.00	365741358	7553219	2685.16
General Merchandise Stores****	513428196	11.96	289.86	86899681	1.42	49.06				3465.51	-182.46	-5.00	365741358	7553219	4014.23
Specialty Retail***	245064168	13.21	67.81	68161748	2.11	18.86				895.99	-4.77	-0.53	75793733	4834662	1036.96
Apparel Retail****	67128828	13.42	73.03	41310048	4.58	44.94				980.34	-0.56	-0.06	27072153	1563117	1240.85
Home Improvement Retail****	143082500	12.57	76.12	18210500	1.01	9.69				957.09	-25.61	-2.61	31541089	2289899	961.72
Specialty Stores****	34852840	15.44	67.08	8641200	1.61	16.63				1035.57	60.43	6.20	17180492	981646	1197.89
Consumer Staples*	2498420138	15.90	108.64	710228770	1.79	30.88				1727.03	15.90	0.93	1701696658	63409359	1998.35
Food & Staples Retailing**	1898153356	14.69	108.36	576787002	2.07	32.93				1591.83	19.87	1.26	1197458532	32979532	1827.01
Food & Staples Retailing***	1898153356	14.69	108.36	576787002	2.07	32.93				1591.83	19.87	1.26	1197458532	32979532	1827.01
Drug Retail****	681371960	14.95	63.42	245476000	2.41	22.85				947.93	29.83	3.25	399598026	12052344	2243.80
Food Retail****	1216781396	14.55	105.84	331311002	1.87	28.82				1539.50	2.38	0.15	797860506	20927188	1786.82
Food Beverage & Tobacco**	600266782	19.71	108.74	133441767	1.13	24.17				2143.54	3.22	0.15	504238126	30429827	2547.99
Beverages***	62535000	12.77	7.21	0	0.00	0.00				92.13	2.95	3.31	32481685	3937918	92.13
Soft Drinks****	62535000	12.77	7.21	0	0.00	0.00				92.13	2.95	3.31	32481685	3937918	92.13
Food Products***	537731782	20.52	100.69	133441767	1.21	24.99				2066.10	-1.47	-0.07	471756441	26491909	2394.95
Agricultural Products****	234136350	18.05	70.87	37164500	0.88	11.25				1279.03	-43.87	-3.32	212457340	18685475	1365.16
Packaged Foods & Meats****	303595432	22.43	130.17	96277267	1.41	41.28				2919.13	58.79	2.06	259299101	7806434	3512.04
Health Care*	355710230	56.44	13.32	93332632	0.46	3.49				751.58	15.00	2.04	522386167	13224242	933.35
Health Care Equip. & Services**	99419200	41.73	54.22	67812742	1.63	36.98				2262.34	-17.92	-0.79	97877312	4377742	2988.93
Health Care Providers & Services***	31444700	29.17	31.69	67812742	7.39	68.33				924.32	3.62	0.39	31516699	3121798	1361.16
Health Care Services****	31444700	29.17	29.30	67812742	7.39	63.18				854.58	3.35	0.39	31516699	3121798	1277.49
Health Care Technology**	67974500	47.54	81.82	0	0.00	0.00				3889.23	-43.88	-1.12	66360613	1255944	3889.23
Health Care Technology****	67974500	47.54	85.89	0	0.00	0.00				4082.78	-46.06	-1.12	66360613	1255944	4082.78
Pharmaceuticals															
Biotech. & Life Sciences**	256291030	62.14	9.44	25519890	0.16	0.94				586.74	15.97	2.80	424508854	8846500	715.11
Pharmaceuticals***	331598710	45.78	23.86	0	0.00	0.00				1092.17	32.83	3.10	418078342	8263848	1488.00
Pharmaceuticals****	331598710	45.78	23.86	0	0.00	0.00				1092.17	32.83	3.10	418078342	8263848	1488.00
Life Sciences Tools & Services***	-75307680		-45.91	25519890	3.42	15.56				454.95	-13.94	-2.97	6430512	582652	460.85
Life Sciences Tools & Services****	-75307680		-45.91	25519890	3.42	15.56				454.95	-13.94	-2.97	6430512	582652	460.85
Financials*	28313188720	16.37	108.47	16685981470	3.60	63.92				1775.89	-26.78	-1.49	17939328002	410187902	2490.04
Banks**	21388538928	14.32	149.51	10966345609	3.58	76.66				2141.01	-50.44	-2.30	12621568535	191265547	3087.86
Commercial Banks***	21086850690	14.39	148.64	10897033360	3.59	76.81				2138.23	-50.81	-2.32	12499335885	187536413	3086.87
Diver. Banks****	20815660710	14.41	147.88	10823452840	3.61	76.89				2131.43	-50.73	-2.32	12199723913	178335911	3079.85
Regional Banks****	271189980	12.23	223.38	73580520	2.22	60.61				2731.59	-55.14	-1.98	299611972	9200502	3362.28
Thriffs & Mortgage Finance***	301688238	9.76	200.07	69312249	2.35	45.97				1953.22	-5.60	-0.29	122232650	3729134	2132.53
Thriffs & Mortgage Finance****	301688238	9.76	200.07	69312249	2.35	45.97				1953.22	-5.60	-0.29	122232650	3729134	2132.53
Diver. Financials**	987316058	20.14	96.37	640506010	3.22	62.52				1941.07	8.13	0.42	691888040	24506304	2722.34
Diver. Financial Services***	239176838	30.56	65.10	193020024	2.64	52.53				1989.58	53.58	2.77	280217638	8358359	2528.23
Other Diver. Financial Services****	82511150	12.34	150.54	63879600	6.27	116.55				1857.93	-131.11	-6.59	35155592	1771664	3291.28
Multi-Sector Holdings****	-39671112		-15.17	10148424	0.31	3.88				1252.20	53.26	4.44	92104833	2711565	1275.53
Specialized Finance****	196336800	15.36	121.52	118992000	3.94	73.65				1866.97	80.09	4.48	152957213	3875130	2421.11
Capital Markets***	748139220	16.81	108.41	447485986	3.56	64.84				1822.49	-16.45	-0.89	411670402	16147945	2515.81
Asset Manage. & Custody Banks****	732673476	16.07	120.88	430420338	3.66	71.01				1941.96	-13.01	-0.67	385211701	14438098	2675.99
Investment Banking & Brokerage****	15465744	52.14	21.35	17065648	2.12	23.56				1113.19	-47.85	-4.12	26458701	1709847	1138.99
Insurance**	3779287252	23.29	42.15	3209704981	3.65	35.80				981.62	-0.77	-0.08	3007870970	123099813	1280.31
Insurance***	3779287252	23.29	42.15	3209704981	3.65	35.80				981.62	-0.77	-0.08	3007870970	123099813	1280.31
Life & Health Insurance****	2935955352	25.58	36.35	2856958680	3.80	35.37				929.88	-1.55	-0.17	2682968409	119224069	1224.20
Multi-Line Insurance****	434517300	17.33	107.66	186980381	2.48	46.33				1865.57	76.17	4.26	151681692	400565	2177.08

S&P/TSX Index Names	Latest 12 Month Earnings \$	P/E Ratio	Earnings Adjst. to Index \$	Indicated Dividends Per Year \$	Yield %	Dividends Adjst. to Index \$	Open	High	Low	Close	Net Change	% Change	Total Value	Total Volume	Total return Index
Property & Casualty Insurance****	408814600	13.15	156.41	165765920	3.08	63.42				2056.96	-96.42	-4.48	173220868	3475179	2414.80
Real Estate**	2158046482	22.87	92.74	1869424870	3.79	80.33				2121.16	9.00	0.43	1618000458	71316238	3169.35
Real Estate															
Investment Trusts (Reits)***	971113836	26.94	45.39	1436282387	5.49	67.13				1222.70	-16.74	-1.35	847690161	41785080	1767.74
Diver. Reits****	365470315	21.04	54.74	391696982	5.09	58.67				1151.90	-19.27	-1.65	207840200	9917778	1564.09
Office Reits****	55322910	47.95	25.25	167034228	6.30	76.22				1210.44	21.00	1.77	139302077	5381514	1321.64
Residential Reits****	124819006	26.68	59.79	152620038	4.58	73.11				1595.23	-13.39	-0.83	73012344	2647315	2109.62
Retail Reits****	403772015	25.43	44.53	580592919	5.65	64.03				1132.44	-14.18	-1.24	299157948	12396298	1615.43
Specialized Reits****	21729590	102.16	6.44	144338220	6.50	42.74				657.40	-35.26	-5.09	128377592	11442175	1069.69
Real Estate Manage. & Develop.***	1186932646	19.55	108.11	433142483	1.87	39.45				2112.94	51.69	2.51	770310296	29531158	2794.54
Diver. Real Estate Activities****	1325552170	13.46	157.07	307596090	1.72	36.45				2114.84	24.85	1.19	480521617	16305751	2771.25
Real Estate Operating Companies****	-141764220	5.84	-2.69	125546393	2.84	2.38				83.83	6.98	9.08	189721136	10562526	95.92
Real Estate Services****	3144697	294.96	0.70	0	0.00	0.00				207.31	-2.40	-1.14	100067543	2662881	207.31
Information Technology*	3584670374	9.49	21.91	41100000	0.12	0.25				208.08	-24.28	-10.45	3215173264	81177816	209.49
Software & Services**	488975610	21.50	63.70	41100000	0.39	5.35				1369.56	11.20	0.82	635146331	20115316	1395.15
Internet Software & Services***	128342250	25.76	18.38	0	0.00	0.00				473.43	-18.63	-3.79	234448067	3878765	473.93
Internet Software & Services****	128342250	25.76	18.38	0	0.00	0.00				473.43	-18.63	-3.79	234448067	3878765	473.93
IT Services***	319533360	15.22	201.59	0	0.00	0.00				3068.32	54.85	1.82	292899430	14247462	3068.32
IT Consulting & Other Services****	319533360	15.22	181.19	0	0.00	0.00				2757.85	49.30	1.82	292899430	14247462	2757.85
Software***	41100000	57.01	34.62	41100000	1.75	34.62				1973.48	108.70	5.83	107798834	1989089	2077.70
Application Software****	41100000	57.01	35.12	41100000	1.75	35.12				2002.40	110.28	5.83	107798834	1989089	2108.16
Technology Hardware & Equip.**	3095694764	7.60	19.28	0	0.00	0.00				146.53	-25.27	-14.71	2580026933	61062500	147.25
Communications Equip.***	3021998012	7.10	14.44	0	0.00	0.00				102.59	-19.45	-15.94	2439679502	47592956	109.24
Communications Equip.****	3021998012	7.10	14.38	0	0.00	0.00				102.16	-19.38	-15.95	2439679502	47592956	108.82
Electronic Equip.															
Instruments & Comp.***	73696752	27.85	10.95	0	0.00	0.00				304.84	2.03	0.67	140347431	13469544	308.69
Electronic Manufacturing Services****	73696752	27.85	42.44	0	0.00	0.00				1181.68	7.90	0.67	140347431	13469544	1192.31
Telecom. Services*	4092366305	15.80	55.36	3168699746	4.90	42.87				874.62	7.44	0.86	2319577208	63503659	1298.55
Telecom. Services**	4092366305	15.80	55.36	3168699746	4.90	42.87				874.62	7.44	0.86	2319577208	63503659	1298.20
Diver. Telecom. Services***	2894301681	16.70	48.16	2521835956	5.22	41.96				804.26	4.83	0.60	1395503585	37049080	1248.26
Integrated Telecom. Services****	2894301681	16.70	52.49	2521835956	5.22	45.74				876.69	5.27	0.60	1395503585	37049080	1361.33
Wireless Telecom. Services***	1198064624	13.62	43.86	646863790	3.97	23.68				597.26	9.50	1.62	924073623	26454579	675.95
Wireless Telecom. Services****	1198064624	13.62	43.86	646863790	3.97	23.68				597.26	9.50	1.62	924073623	26454579	675.95
Utilities*	1235156079	20.90	91.17	1221039178	4.73	90.13				1905.29	-11.59	-0.60	812586991	32634359	3015.97
Utilities**	1235156079	20.90	91.17	1221039178	4.73	90.13				1905.29	-11.59	-0.60	812586991	32634359	3015.97
Electric Utilities***	481067850	19.31	114.11	351842960	3.79	83.46				2203.86	-31.29	-1.40	257163292	8076349	3413.48
Electric Utilities****	481067850	19.31	114.11	351842960	3.79	83.46				2203.86	-31.29	-1.40	257163292	8076349	3413.48
Multi-Utilities***	669239535	11.28	164.04	310594263	4.11	76.13				1851.12	-11.09	-0.60	227410431	7773453	2744.69
Multi-Utilities****	669239535	11.28	164.04	310594263	4.11	76.13				1851.12	-11.09	-0.60	227410431	7773453	2744.69
Indep. Power Prod. & Energy Traders***	84848694	105.71	9.85	558601955	6.23	64.82				1040.72	2.33	0.22	328013268	16784557	1475.48
Indep. Power Prod. & Energy Traders****	84848694	105.71	9.85	558601955	6.23	64.82				1040.72	2.33	0.22	328013268	16784557	1475.48
<b>S&amp;P/TSX Equity - Sectors</b>															
Energy*	15639280611	28.00	126.65	10324011324	2.36	83.61				3545.80	-69.74	-1.93	23897123752	970040532	4058.43
Materials*	14836350200	24.71	155.27	2058393298	0.56	21.54				3837.49	-14.99	-0.39	35651975893	1999449301	4235.07
Industrials*	4878906463	18.55	79.04	1693249856	1.87	27.43				1465.96	5.96	0.41	3699937271	212578778	1691.21
Consumer Discretionary*	4312724584	15.58	75.22	1895876926	2.82	33.07				1172.26	4.13	0.35	3687096126	168877785	1387.31
Consumer Staples*	2498420138	15.90	109.06	710228770	1.79	31.00				1733.73	15.96	0.93	1701696658	63409359	1993.58
Health Care*	355710230	56.44	13.91	93332632	0.46	3.65				785.11	15.67	2.04	522386167	13224242	944.71
Financials*	27342074884	16.00	111.20	15249699083	3.49	62.02				1778.92	-26.99	-1.49	17091637841	368402822	2471.50
Information Technology*	3584670374	9.49	21.49	41100000	0.12	0.25				204.03	-23.81	-10.45	3215173264	81177816	204.98
Telecom. Services*	4092366305	15.80	56.99	3168699746	4.90	44.13				900.39	7.67	0.86	2319577208	63503659	1314.25
Utilities*	1365821700	17.34	122.88	1074537098	4.54	96.67				2130.76	-4.80	-0.22	703642765	27662054	3180.51
*Sector															
**Industry Group															
***Industry															
****Sub Industry															

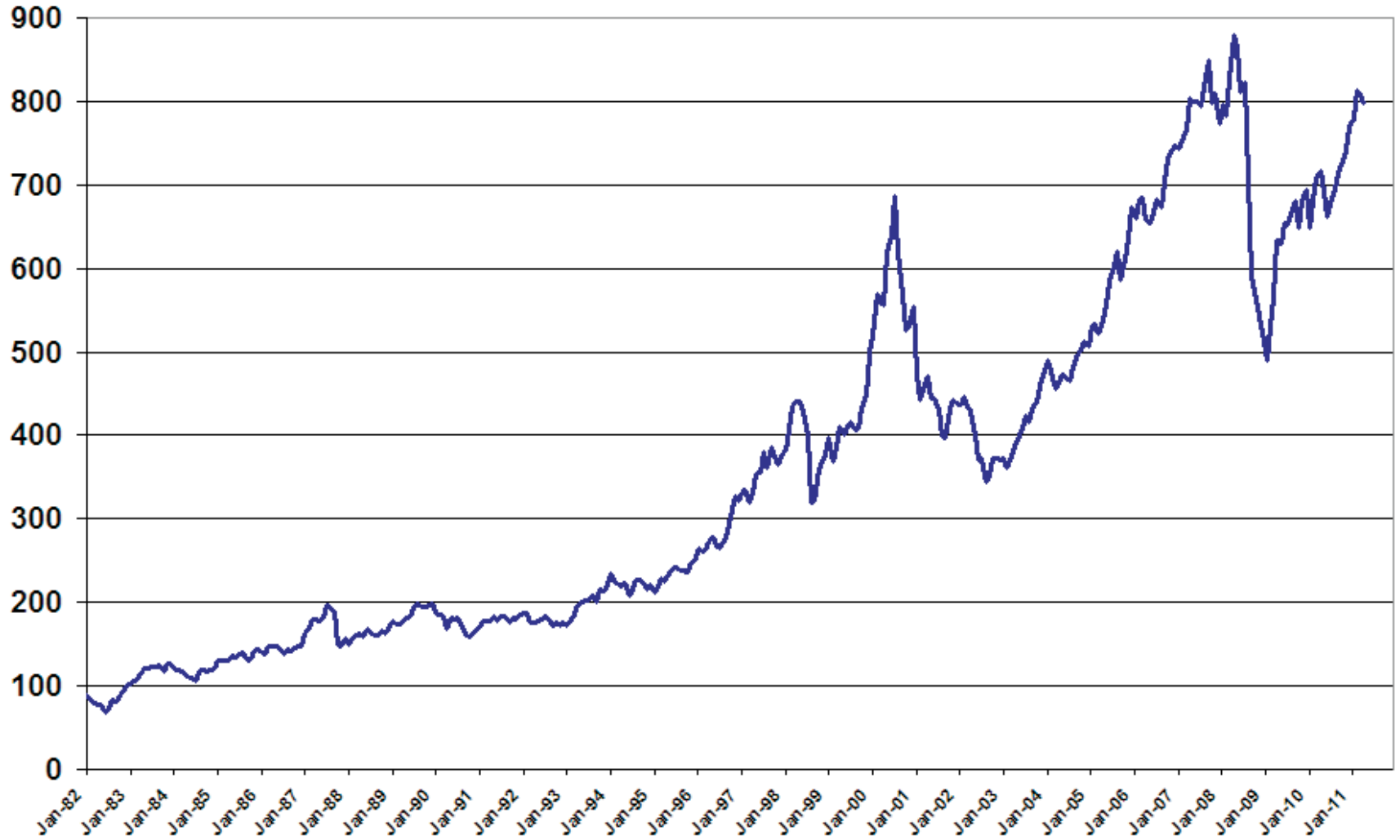
**S&P/TSX 60 INDEX  
DAILY LEVELS FOR THE MONTH OF APRIL 2011**

DATE	HIGH	LOW	CLOSE	VOLUME	TRIV
April 01	814.24	809.16	810.49	102,239,548	1,786.96
04	817.41	810.89	815.37	72,937,929	1,797.73
05	818.06	813.78	817.65	92,804,607	1,802.75
06	820.07	808.49	812.90	95,746,376	1,792.34
07	813.06	806.04	806.88	80,817,407	1,779.06
08	813.60	807.26	812.10	86,302,953	1,790.57
11	812.26	796.18	800.39	78,836,945	1,764.74
12	800.33	784.22	789.66	97,973,578	1,741.30
13	798.68	789.20	790.00	101,121,072	1,742.08
14	791.04	786.60	789.45	81,059,946	1,740.87
15	793.82	788.58	788.73	87,326,211	1,739.29
18	788.69	776.27	783.74	78,346,207	1,728.27
19	787.11	781.91	785.73	73,740,814	1,732.65
20	796.12	786.23	794.52	73,561,627	1,752.05
21	799.62	794.00	799.22	71,392,638	1,763.46
25	799.94	793.56	794.75	61,907,442	1,753.60
26	796.91	793.49	795.72	73,406,866	1,755.74
27	798.13	786.23	794.06	106,545,543	1,752.28
28	796.08	790.86	794.13	82,459,813	1,753.04
29	797.95	791.93	797.90	87,801,547	1,761.35

**S&P/TSX 60 INDEX  
MONTHLY AND YEARLY HIGHS AND LOWS  
(Based on Closing Indices)**

	Stock Price Index			Total Return Index		
	High	Low	Close	High	Low	Close
<b>2010</b>						
April	817.65	783.74	797.90	1802.75	1728.27	1761.35
March	819.25	780.58	809.16	1800.34	1717.52	1782.36
February	813.89	785.22	813.29	1787.17	1723.38	1786.89
January	778.65	757.61	778.65	1708.95	1660.80	1708.95
<b>2010</b>						
December	768.65	750.73	768.65	1684.21	1641.30	1684.21
November	746.96	723.14	741.34	1629.03	1578.57	1619.63
October	732.03	712.89	728.09	1594.43	1552.59	1587.83
September	716.14	699.29	715.07	1558.12	1518.01	1555.80
August	694.05	670.98	694.05	1506.32	1454.64	1506.32
July	689.81	650.08	685.03	1492.73	1406.55	1484.35
June	702.23	660.08	662.05	1516.26	1426.63	1430.89
May	716.83	674.18	691.63	1543.12	1452.29	1490.86
2011	819.25	757.61	—	1802.75	1660.80	—
2010	768.65	648.53	768.65	1684.21	1386.76	1684.21
2009	701.36	458.13	693.23	1492.55	952.57	1479.42
2008	900.93	463.57	541.82	1834.01	955.09	1121.27
2007	848.82	716.27	808.53	1703.21	1413.95	1628.96
2006	749.51	615.86	742.77	1477.08	1202.22	1465.66
2005	637.60	498.36	634.72	1235.55	948.12	1229.95
2004	514.80	449.51	511.91	978.71	843.98	973.90
2003	461.33	355.12	458.72	860.37	651.11	855.49
2002	455.04	319.25	373.15	816.85	580.12	681.59
2001	556.77	377.99	442.55	980.20	673.16	792.51
2000	695.69	476.27	528.72	1218.28	827.52	930.36
1999	502.07	358.66	495.86	872.15	613.67	861.55

### S&P/TSX 60 Index



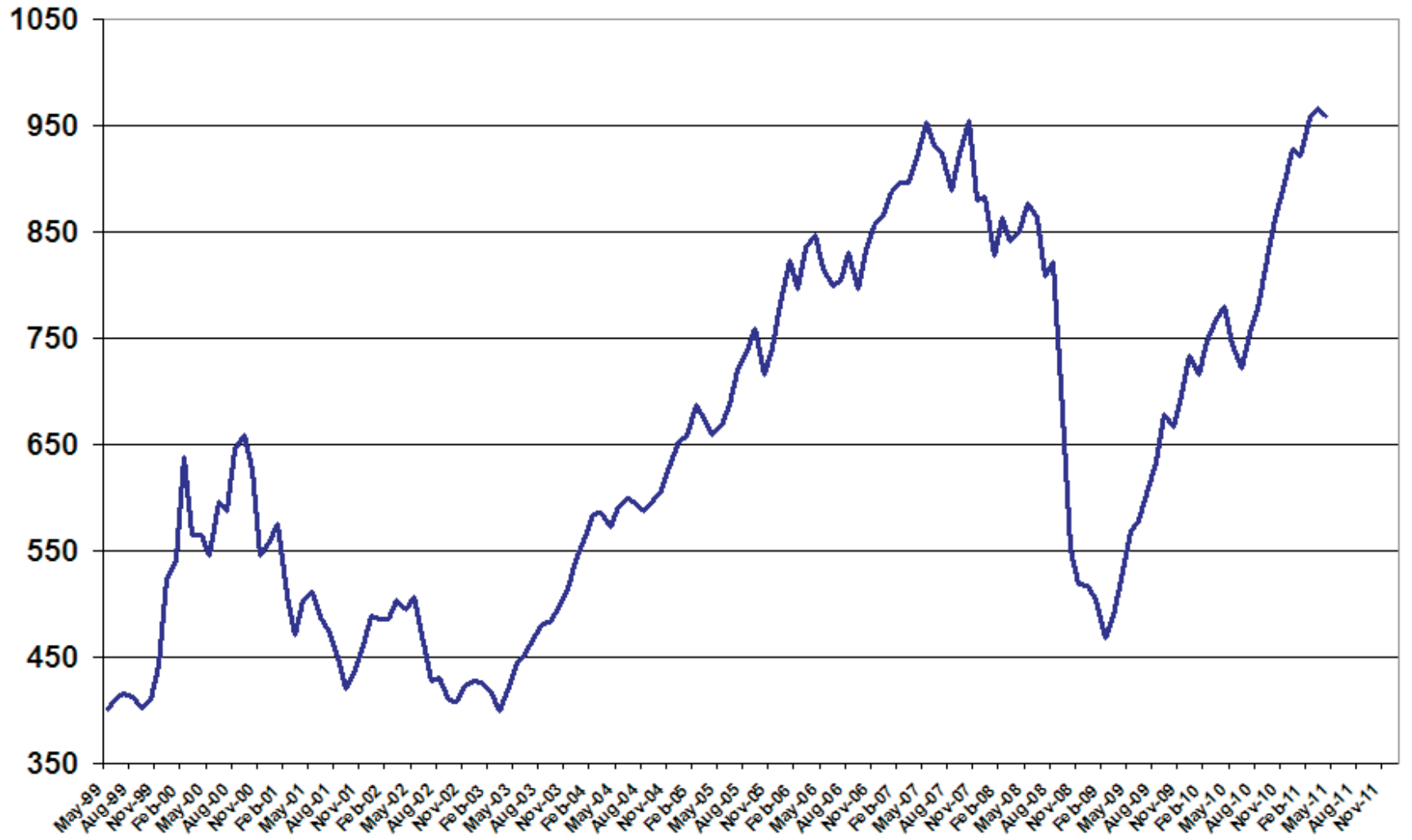
**S&P/TSX COMPLETION INDEX  
DAILY LEVELS FOR THE MONTH OF APRIL 2011**

DATE	HIGH	LOW	CLOSE	VOLUME	TRIV
April 01	966.36	962.75	965.31	137,829,521	1,268.54
04	974.33	966.75	971.91	153,264,986	1,277.22
05	977.88	969.10	977.88	140,702,794	1,285.06
06	981.90	974.28	976.10	138,461,654	1,282.81
07	979.25	971.30	971.56	113,309,671	1,276.84
08	982.29	971.60	980.30	119,581,240	1,288.33
11	980.30	961.83	964.43	98,673,077	1,267.47
12	964.43	946.49	949.43	131,089,218	1,247.76
13	957.18	949.63	956.73	130,794,910	1,257.51
14	957.83	953.71	955.48	103,363,507	1,255.88
15	959.03	951.97	951.97	96,473,160	1,251.26
18	951.79	937.19	943.47	105,446,645	1,240.13
19	946.50	939.29	945.81	101,087,642	1,243.21
20	960.88	946.52	958.20	104,402,525	1,259.72
21	962.71	958.20	961.86	73,622,443	1,264.54
25	966.19	958.68	960.00	129,297,286	1,262.09
26	959.57	954.42	957.19	119,621,731	1,258.40
27	961.46	952.61	958.48	137,977,959	1,261.11
28	963.27	957.27	958.70	93,009,197	1,261.52
29	959.70	956.82	959.19	110,105,065	1,262.17

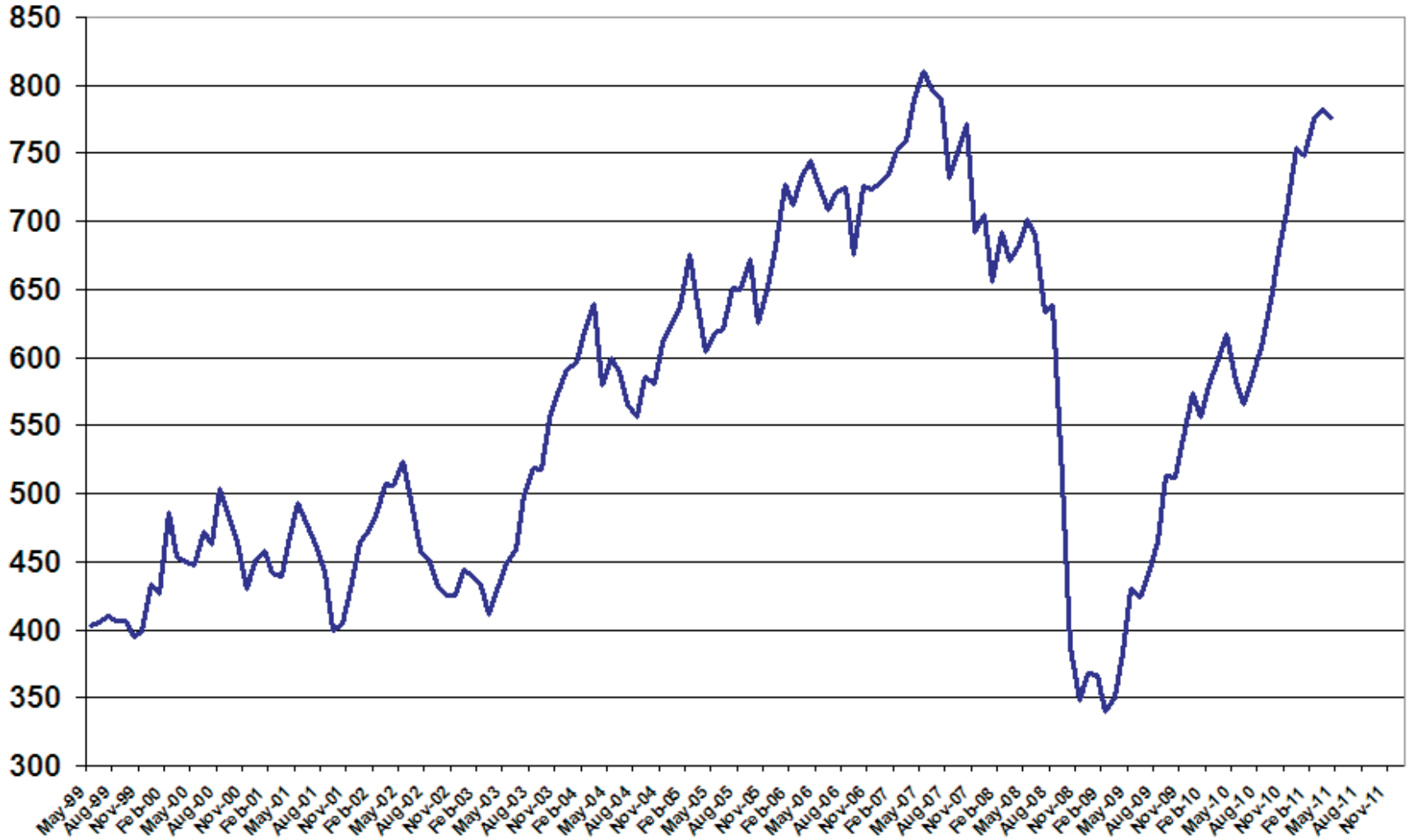
**S&P/TSX SMALLCAP INDEX  
DAILY LEVELS FOR THE MONTH OF APRIL 2011**

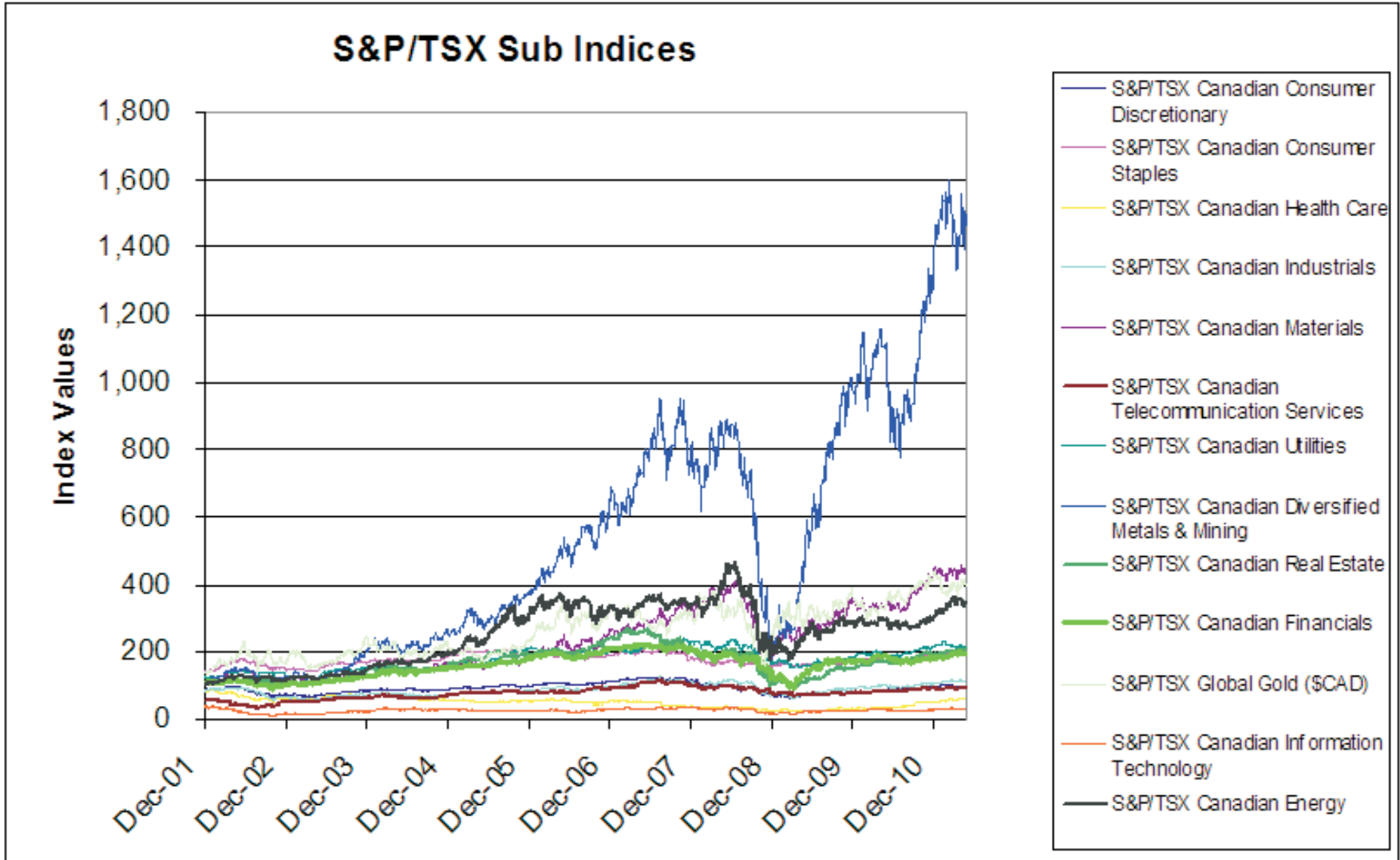
DATE	HIGH	LOW	CLOSE	VOLUME	TRIV
April 01	785.17	780.35	784.95	95,689,160	1,023.19
04	791.89	784.98	790.59	76,057,104	1,030.56
05	798.67	788.01	798.64	107,225,044	1,041.06
06	803.36	796.79	798.72	96,972,163	1,041.32
07	801.84	794.06	794.39	72,006,164	1,035.67
08	803.43	794.61	801.06	109,634,053	1,044.37
11	801.65	783.58	786.11	84,385,175	1,024.89
12	786.13	769.57	772.48	84,843,956	1,007.11
13	781.87	772.48	781.87	82,908,086	1,019.63
14	784.50	779.93	783.94	68,325,787	1,022.35
15	786.35	779.43	779.43	59,672,123	1,016.46
18	779.31	763.82	770.48	83,616,557	1,004.79
19	770.51	765.00	769.79	64,519,681	1,003.92
20	780.77	770.20	779.50	78,110,091	1,016.63
21	782.24	779.11	781.60	59,384,786	1,019.37
25	783.40	775.56	777.23	47,863,297	1,013.67
26	776.12	771.90	774.13	68,546,170	1,009.63
27	779.57	769.40	777.59	66,380,292	1,015.03
28	780.91	775.47	777.79	55,692,012	1,015.31
29	778.62	775.70	775.99	53,164,486	1,012.97

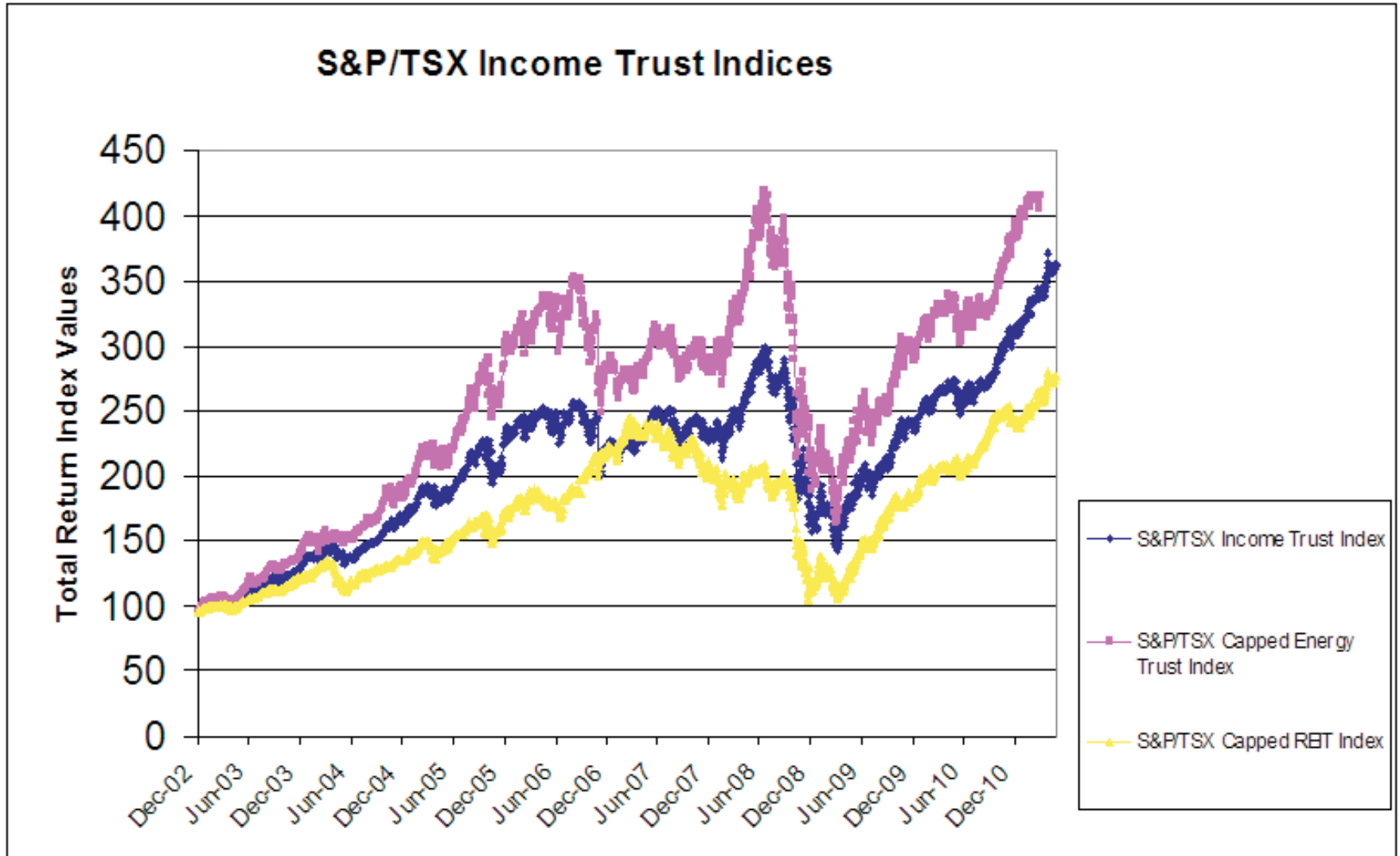
### S&P/TSX Completion Index



### S&P/TSX SmallCap Index







### S&P/TSX Canadian Index Returns Summary - as at April 29, 2011

#### Total Return Summary

	1 Month	3 Month	6 Month	1 Year	5 Year	Year to date
S&P/TSX Composite Index	-1.02%	3.50%	11.37%	17.22%	5.63%	4.52%
S&P/TSX 60 Index	-1.18%	3.07%	10.93%	14.32%	5.71%	4.58%
S&P/TSX Completion Index	-0.58%	4.69%	12.65%	26.54%	6.27%	4.28%
S&P/TSX SmallCap Index	-0.60%	4.36%	15.73%	29.10%	4.71%	3.62%
S&P/TSX 60 Capped Index	-1.18%	3.07%	10.93%	14.32%	5.71%	4.58%
S&P/TSX Capped Composite Index	-1.02%	3.50%	11.37%	17.22%	5.63%	4.52%

#### Comparative Weights

Sector	S&P/TSX Composite	S&P/TSX 60		S&P/TSX Completion	
	Weight	Weight	Diff	Weight	Diff
Consumer Discretionary	4.15%	4.23%	0.07%	3.95%	-0.21%
Consumer Staples	2.45%	2.27%	-0.19%	2.98%	0.52%
Energy	27.31%	27.47%	0.16%	26.85%	-0.46%
Financials	28.65%	31.40%	2.75%	20.95%	-7.70%
Health Care	1.24%	1.27%	0.03%	1.15%	-0.09%
Industrials	5.69%	5.30%	-0.38%	6.77%	1.08%
Information Technology	2.10%	1.80%	-0.30%	2.96%	0.85%
Materials	22.81%	20.43%	-2.38%	29.50%	6.69%
Telecommunication Services	4.00%	4.97%	0.97%	1.27%	-2.73%
Utilities	1.60%	0.87%	-0.73%	3.64%	2.04%
Grand Total	100.00%	100.00%	0.00%	100.00%	0.00%